

Instalazioa irudi txiki batekin

Mageia urrutiko biltegiekin instalatzeko tresna



Manual honetan jasotako testuak eta irudiak CC BY-SA 3.0 babespean daude <http://creativecommons.org/licenses/by-sa/3.0/>.

[Calenco CMS](http://www.calenco.com) [http://www.calenco.com]-ren laguntzarekin egin da eskuliburu hau [NeoDoc](http://www.neodoc.biz) [http://www.neodoc.biz]-k garatuta.

Boluntarioek beren aisialdian idatzi zuten. Zoaz [Dokumentazio Talde](https://wiki.mageia.org/en/Documentation_team) [https://wiki.mageia.org/en/Documentation_team]ra bada eskuliburu hau hobetzen lagundu ahal baduzu.

Instalazioa irudi txiki batekin

Edukien aurkibidea

.....	1
1. instalazioa abio irudi txiki-txiki batekin	1
1.1. Laburpena	1
1.2. Hasi aurretik	1
1.3. Instalatzen	1
1.4. Instalatzen - Etapa 2	10

1. instalazioa abio irudi txiki-txiki batekin

1.1. Laburpena

Mageia-<version>-netinstall-<arch>.iso (former known as Boot.iso) is a small image that contains no more than that which is needed to start the drakx installer and find either:

- **online iturri** (edo tokiko ispilua)
- ISO irudia tokiko **disko gogor** edo **USB makil** batean
- ISO irudia **CD/DVD ROM** batean
- the ISO image on a **lan** (local area network)

jarraitzeko eta instalazioa osatzeko.

1.2. Hasi aurretik

The Mageia-<version>-netinstall-nonfree-<arch>.iso (former known as boot-nonfree.iso) contains additional proprietary device drivers, which may be required for your network device, disk controller or, perhaps other device.



The Mageia-<version>-netinstall-nonfree-<arch>.iso and Mageia-<version>-netinstall-<arch>.iso files can be used to launch a network install over a wired or wifi unencrypted network. (Encrypted wifi or bluetooth not allowed)



Unlike when installing from DVD or LiveCD, during the first part of the installation, **Stage 1**, you will be asked to type things. During this stage, your keyboard will respond like an [American keyboard](https://en.wikipedia.org/wiki/Keyboard_layout#United_States) [https://en.wikipedia.org/wiki/Keyboard_layout#United_States]. This can be very confusing when you need to type names and paths.

You can find the Mageia-<version>-netinstall-nonfree-<arch>.iso and Mageia-<version>-netinstall-<arch>.iso [here](https://www.mageia.org/en/downloads/) [https://www.mageia.org/en/downloads/]. It is called Network Installation.

You can also download these images from whatever mirror you want in this list <http://mirrors.mageia.org/>. Just follow the path /`distrib//cauldron/$ARCH/install/images/` where \$ARCH is i586 or x86_64.

After downloading the image, burn it on a CD/DVD or, if you prefer to put it on a USB stick, follow the instructions [here](https://wiki.mageia.org/en/Installation_Media#Dump_Mageia_ISOs_on_an_USB_stick) [https://wiki.mageia.org/en/Installation_Media#Dump_Mageia_ISOs_on_an_USB_stick].

1.3. Instalatzen

Urrats hau, gainera, etapa 1 deritzo

1.3.1. Zure ordenagailua BIOS moduan hasten da (MBR baita Master Boot Record deitzen dena)

Lehenengo pantailan hau agertuko da

```

Welcome to Mageia install help

In most cases, the best way to get started is to simply press the <Enter> key.
If you experience problems with standard install, try one of the following
install types (type the highlighted text and press <Enter>):

o text for text installation instead of the graphical one.
o linux for standard graphical installation at normal resolution.
o linux vga=785 for low resolution graphical installation.

To repair an already installed system type rescue followed
by <Enter>.

You can also pass some <specific kernel options> to the Linux kernel.
For example, try linux noapic if your system has trouble operating
your network adapter correctly.
NOTE: You cannot pass options to modules (SCSI, ethernet card) or devices
such as CD-ROM drives in this way. If you need to do so, use noauto mode.

[F1-Help] [F2-Advanced Help]
boot: _
```

When booting up, you can choose to read the advanced help by pressing F2 and return to the installer screen with F1. If you don't choose one, the boot will continue with default settings.

1.3.2. Your computer boots in UEFI mode

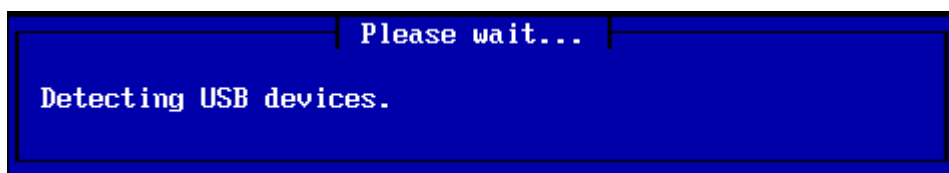
Lehenengo pantailan hau agertuko da



Use the arrow keys to select Start Mageia n Install and press Enter.

1.3.3. *Bi moduetan*

Ondoren pantaila hau ikusiko duzu:



During Stage 1, nothing will be written to your Hard Disk, so it is safe at any point to quit. You can do so by pressing `ctrl+alt+del`.

You can use `alt+F3` to read the logs and `alt+F1` to return to the installer screen.

1.3.4. *Instalatzeko metodoa aukeratu*

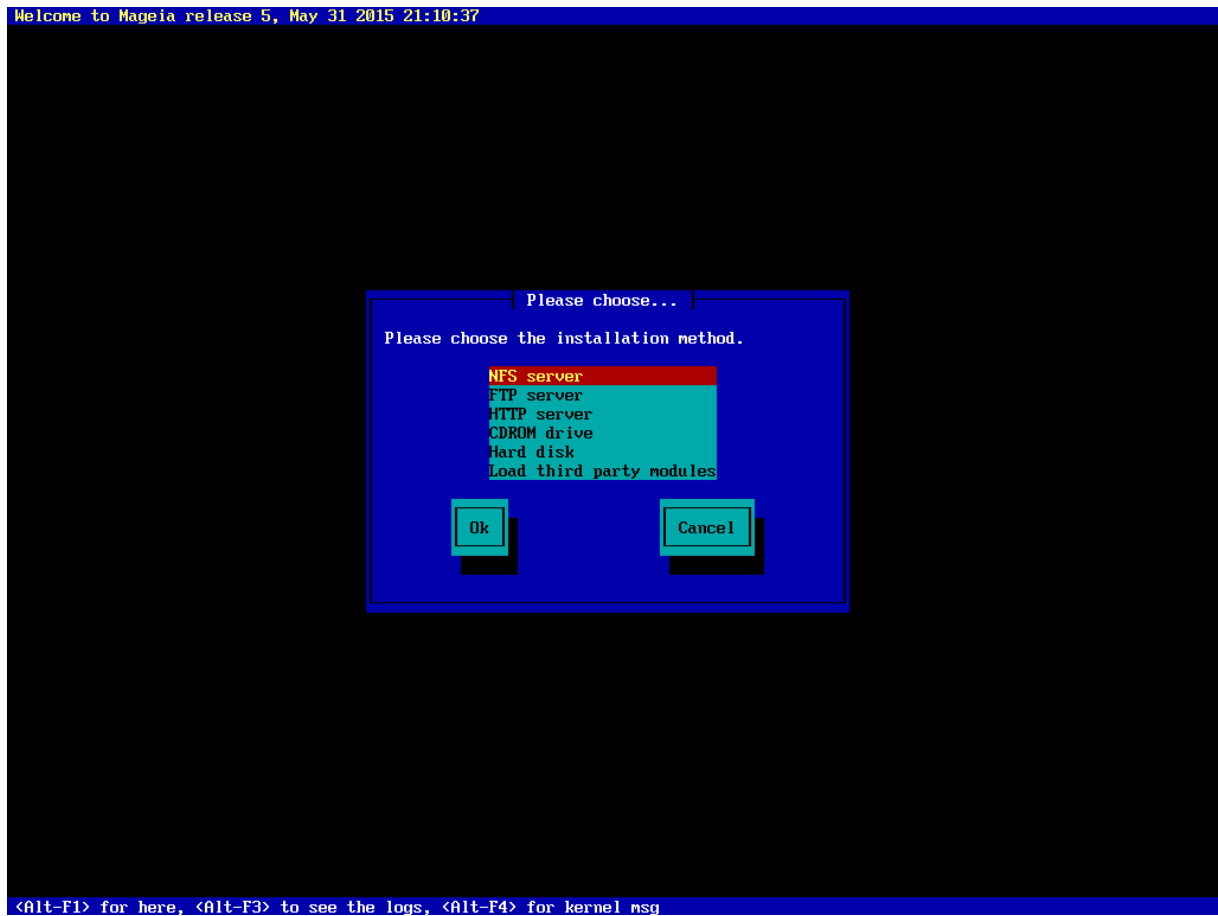
Use the arrow keys to move down and up the list, until your method of choice is highlighted.

If you don't know what to choose for a **Network Installation**, choose FTP server.

On an enterprise network, FTP and rsync may be blocked, so using **HTTP server** is a good choice in this case.

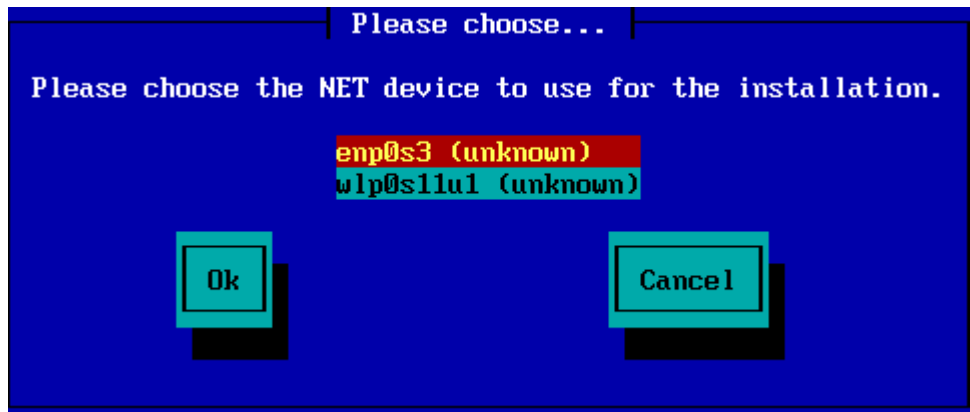
Press the tab key until Ok is highlighted and then press enter.

Disko gogor edo USB-tik instalatzeko, ikus behean.

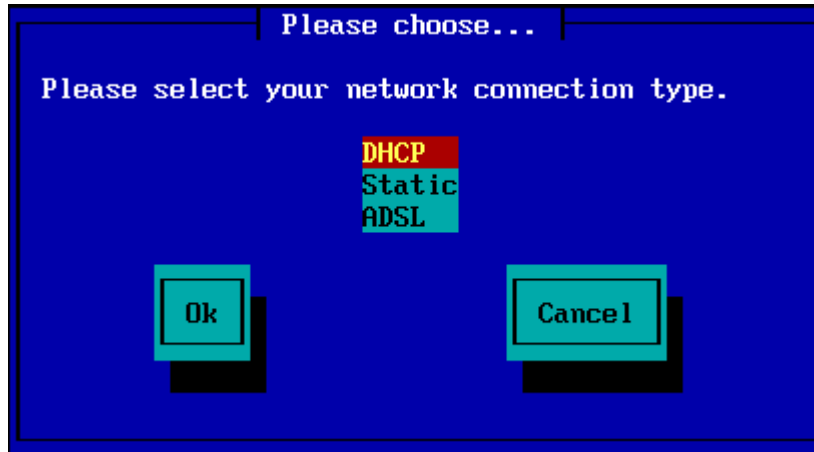


1.3.5. Sare konexio mota hautatzen

If you have several network cards, choose the right one.

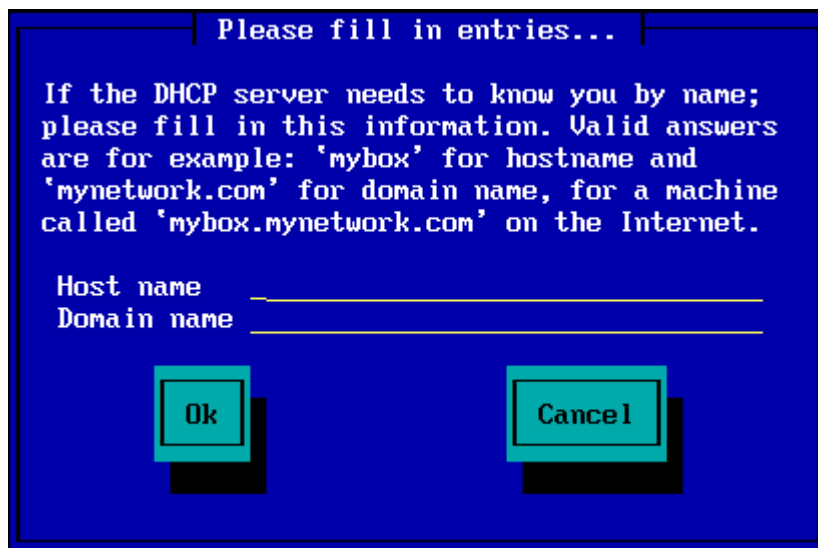


If you don't know what to choose, choose **DHCP**



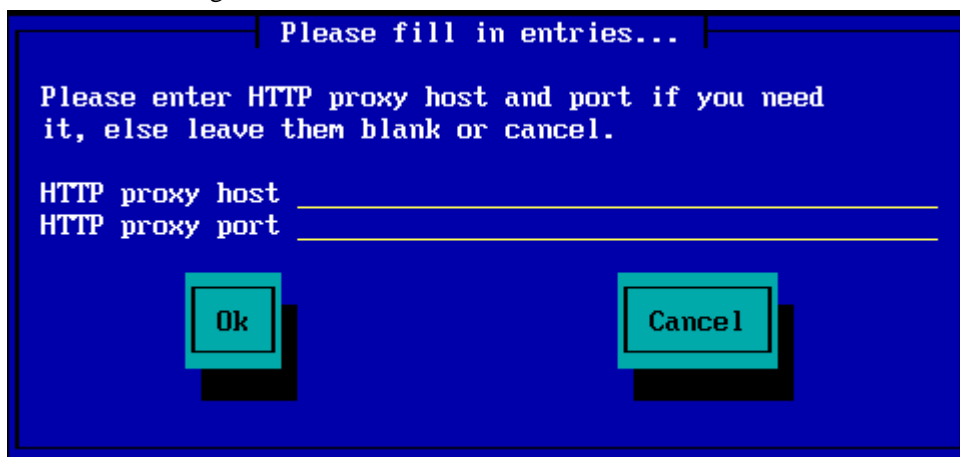
1.3.6. host eta domeinu izena ezartzen

If you don't know what to do: leave it blank and select "Ok"



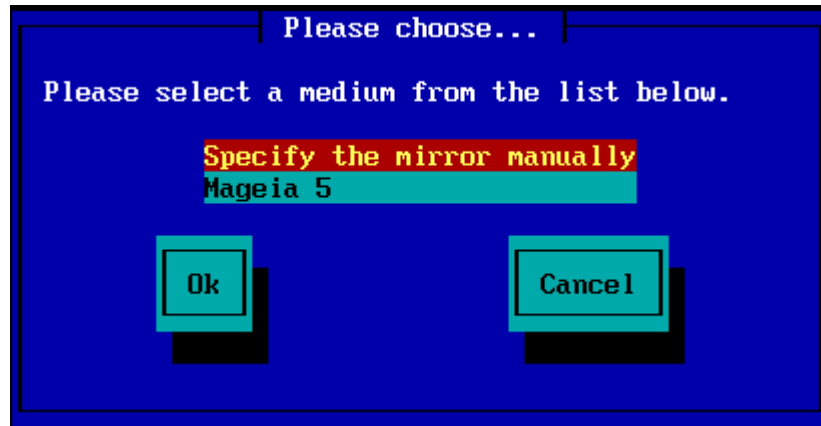
1.3.7. HTTP proxy-a

Utzi hutsik ez badakizu zer egin



1.3.8. Aukeratu euskarria

- If you choose to specify the mirror manually, you'll have to type the path to your preferred medium. This can be very hard if you don't have an American keyboard.
- Selecting the "Mageia" option will give you a list you can choose from by moving up and down with the arrow keys.



1.3.8.1. Zehaztu ispilua eskuz

Whichever server you choose, listed [here](http://mirrors.mageia.org/) [http://mirrors.mageia.org/], it should use the same tree-like structure from "mageia" (or "Mageia") as used by the official Mageia mirrors. That means ../mageia/distrib/<version>/<arch>

A correct entry (when using an official mirror) in the "Mageia directory" field below, could be:

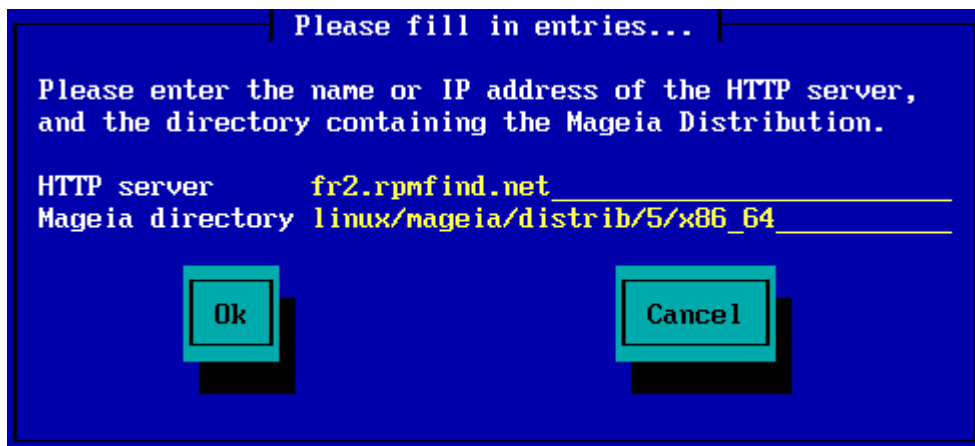
pub/linux/mageia/distrib/cauldron/i586

Mageia 5 x86_64 beste adibide izango litzateke:

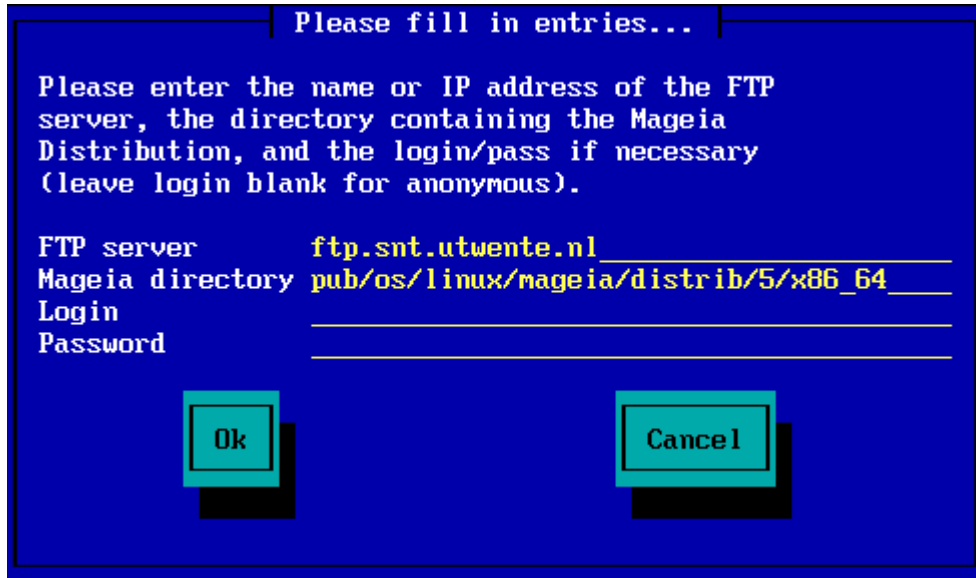
pub/Mirrors/Mageia/distrib/5/x86_64.

Other mirrors may have a different structure and the screenshots below show such examples:

HTTP zerbitzari bat aukeratu baduzu:

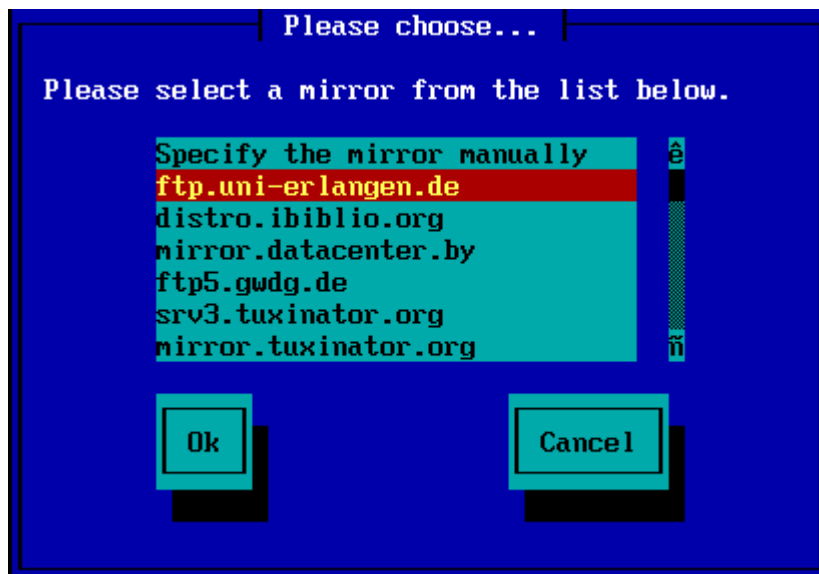


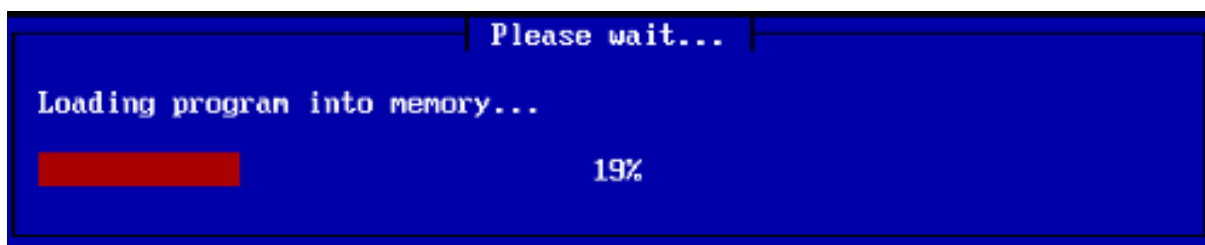
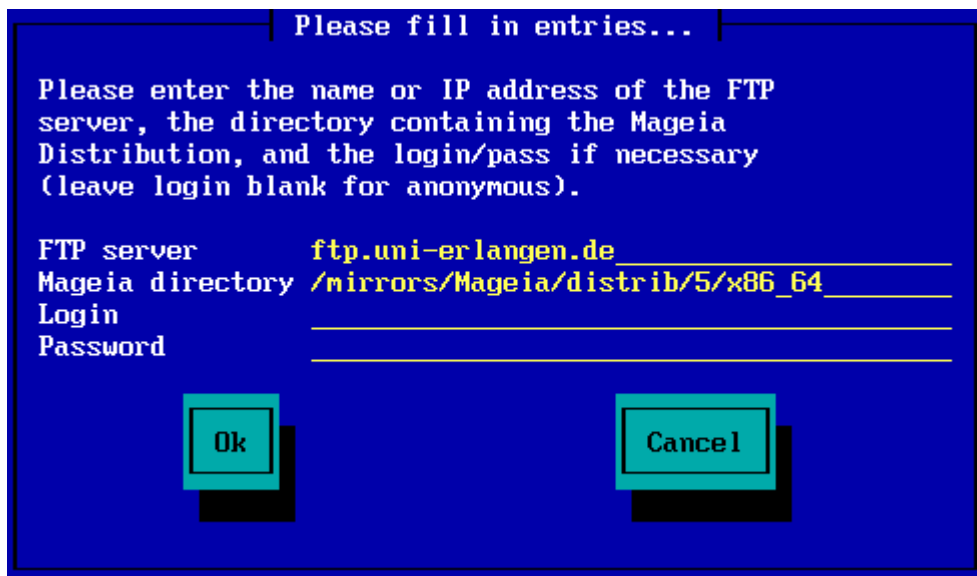
FTP zerbitzari bat aukeratu baduzu:



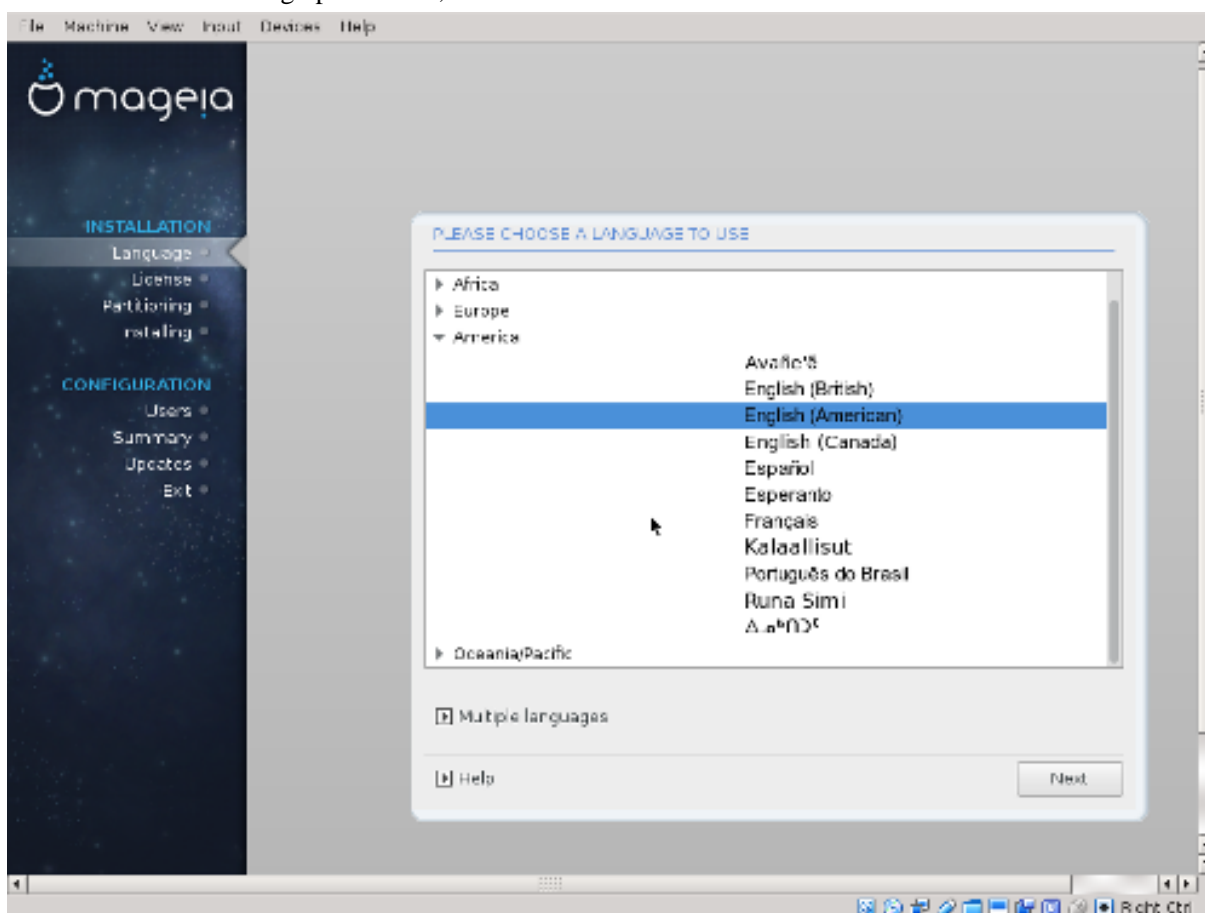
1.3.8.2. Mageia n (selecting a mirror from the list)

- If you get a lot of missing dependency errors later in the install, reboot and try a different mirror.
- After choosing an FTP server, you get a screen where you can add a login name and password if required.
- After this step, **Stage 2** will be installed and started

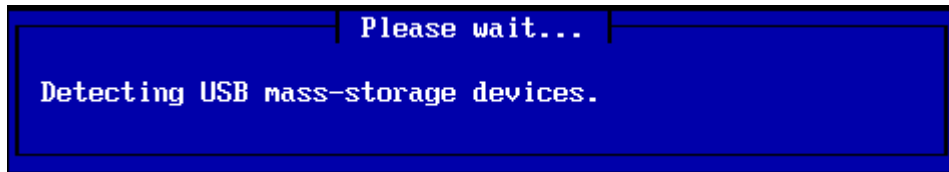




Hau 2.urratsko lehenengo pantaila da, ikus instalazioa - 2. urratsa ondoren:



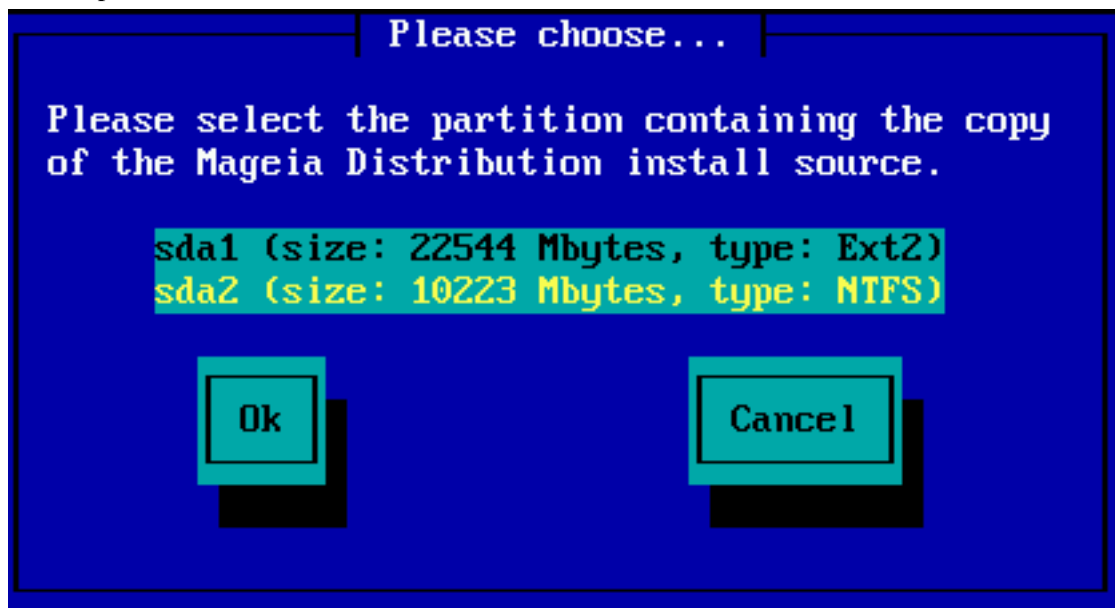
1.3.9. Disko gogorretik instalatu



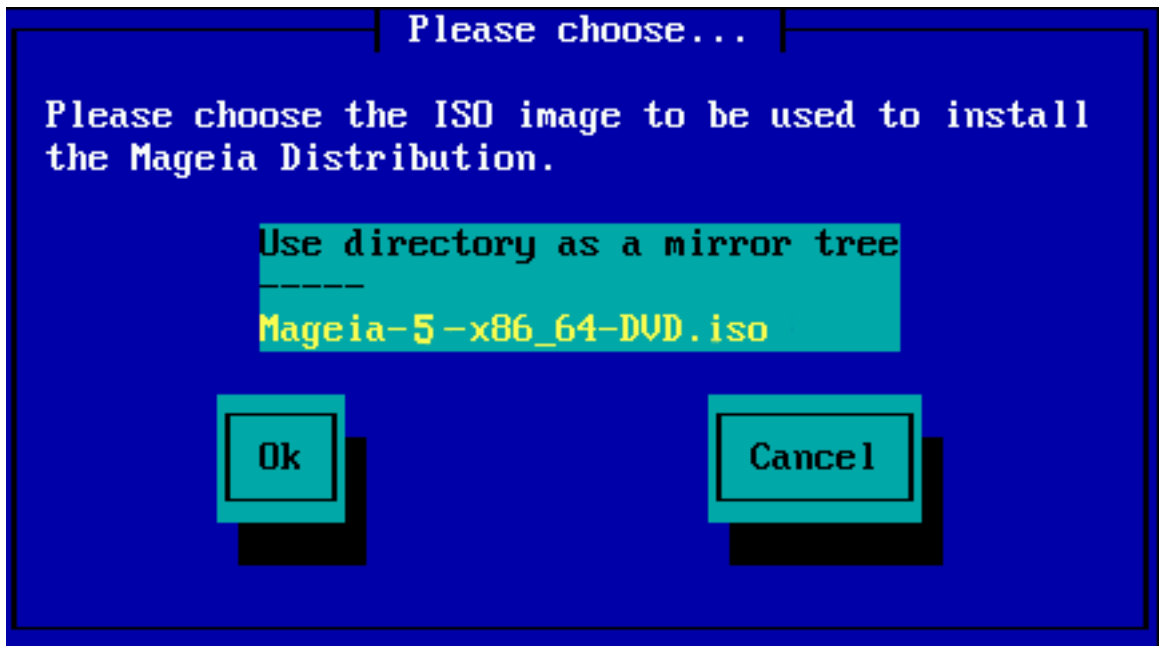
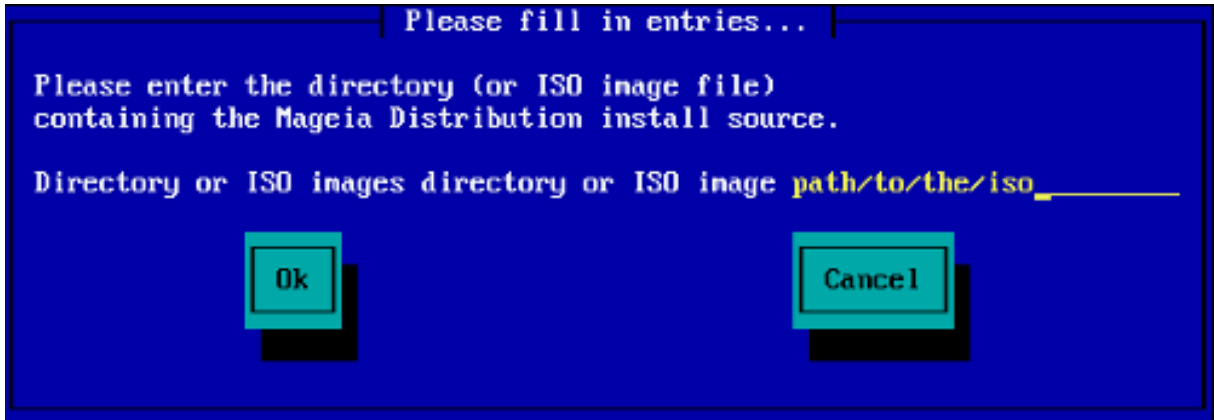
If you choose to install from hard disk or USB stick, you must know where the iso file is saved. First, select your hard drive (or USB stick)



eta ondoren partizioa



Then specify the directory or the file name of the iso. Leaving open or using the directory is easier, because the installer then offers you a list of directories and files, from which you can select with up and down arrows, as seen by the second image.



1.4. Instalaten - Etapa 2

- The first screen you see now, is the "Please choose a language to use" screen. Nothing has been written to your HD yet. If you want to reboot, go to tty2 with ctrl+alt+F2 and press ctrl+alt+del. (ctrl+alt+F7 to come back if you change your mind).
- This part of the install is the same as shown in <http://doc.mageia.org/installer/5/en/content/selectLanguage.html>. Please click the link to continue reading and change the "5" in the URL to the version you are installing.