

The mglT_EX package*

Diego Sejas Viscarra
dsejas.mathematics@gmail.com

December 1, 2021

Abstract

MathGL is a fast and efficient library by Alexey Balakin for the creation of high-quality publication-ready scientific graphics. Although it defines interfaces for many programming languages, it also implements its own scripting language, called *MGL*, which can be used independently. With the package mglT_EX, MGL scripts can be embedded within any L^AT_EX document, and the corresponding images are automatically created and included.

This manual documents the usage of the commands and environments of mglT_EX.

Contents

1	Introduction	2
1.1	Conventions and notations	2
2	Usage	3
2.1	Warning for the user	5
2.2	Environments for MGL code embedding	6
2.3	Fast creation of graphics	9
2.4	Verbatim-like environments	10
2.5	Working with external scripts	12
2.6	Additional commands	13
2.7	Local settings commands	13
2.8	Advanced settings commands	15
2.9	User-definable macros	16
3	Behavior of mglT_EX	17
3.1	Creation and inclusion of MGL scripts and graphics	18
3.2	Recompilation-decision algorithm	18
4	Acknowledgements	21

*This document corresponds to mglT_EX v4.2, dated 2016/04/26.

5	Redistributing and modifying	21
6	Implementation	21
6.1	Initialization	21
6.2	Anatomy of environments and commands	30
6.3	Environments for MGL code embedding	37
6.4	Fast creation of graphics	43
6.5	Verbatim-like environments	46
6.6	Commands for external scripts	50
6.7	Additional commands	55
6.8	Local settings commands	57
6.9	Advanced settings commands	58
6.10	User-definable macros	59
6.11	Final adjustments	59

1 Introduction

MathGL is a fast and efficient library by Alexey Balakin for the creation of high-quality publication-ready scientific graphics. It implements more than 50 different types of graphics for 1d, 2d and 3d large sets of data. It supports exporting images to bitmap formats (PNG, JPEG, BMP, etc.), or vector formats (EPS, \TeX , SVG, etc.), or 3d image formats (STL, OBJ, XYZ, etc.), and even its own native 3d format, MGLD. MathGL also defines its own vector font specification format, and supports UTF-16 encoding with \TeX -like symbol parsing. It supports various kinds of transparency and lighting, textual formula evaluation, arbitrary curvilinear coordinate systems, loading of subroutines from .dll or .so libraries, and many other useful features.

MathGL has interfaces for a wide variety of programming languages, such as C/C++, Fortran, Python, Octave, Pascal, Forth, and many others, but it also defines its own scripting language, called *MGL*, which can be used to generate graphics independently of any programming language. The $\text{mgl}\text{\TeX}$ package adds support to embed MGL code inside \LaTeX documents, which is automatically extracted and executed, and the resulting images are included in the document.

Besides the obvious advantage of having available all the useful features of MathGL, $\text{mgl}\text{\TeX}$ facilitates the maintenance of your document, since both code for text and code for graphics are contained in a single file.

1.1 Conventions and notations

For what's left of this manual, the symbols “ \langle ” and “ \rangle ” will enclose the description of an object that should be placed in that location; this is called a *meta-variable*. For example, $\langle \text{text} \rangle$ is a meta-variable that indicates that in that location should be placed any form of text.

In order to save space and time, some special conventions should be applied to meta-variables:

1. Any meta-variable that contain the word *directory* indicates the name of a directory, in the form of an absolute or relative path, ending with the slash (“/”) character.
2. Any meta-variable that contain the word *subdirectory* indicates a relative path ending with the slash (“/”) character.
3. $\langle x_1|x_2|\dots|x_n \rangle$ indicates that any of the values x_1, x_2, \dots, x_n can be placed there. A special case is $\langle x_1|x_2|\dots \rangle$, where no upper limit is set.
4. The possible values of a meta-variable could also be indicated by a property. For example $\langle x : x > 0 \rangle$ indicates that any positive value can be used in that location.
5. A meta-variable of the form $\langle list\ of\ something \rangle$ or $\langle something\ list \rangle$ indicate a comma-separated list of values of type $\langle something \rangle$; if only one value is used, no comma is needed.
6. A meta-variable with underscores (“_”) in its description indicate that spaces should not be used in that location.
7. $\langle key-val\ list \rangle$ refers to a list of $\langle key \rangle = \langle value \rangle$ pairs of options, where $\langle key \rangle$ is a keyword name for an option and $\langle value \rangle$ is a value assigned to it.

As is conventional for L^AT_EX packages, the environments and commands defined by mglT_EX accept optional commands inside brackets (“[” and “]”), and mandatory arguments inside curly braces (“{” and “}”).

While reading the following, it must be noted that most of mglT_EX settings have three modes: global, local and private. A setting is *global* if it applies to the whole document, it is *local* if it applies to the document from one point onwards, and it is *private* if it applies only to a particular MGL script. Global settings are set thorough package options or with the command `\mglsettings` (explained later), local settings have associated commands (subsection 2.7), and private settings are specified as optional arguments for environments and commands. An example of this would be the package option `4q`, the command `\mglquality{4}`, and the optional argument for environments and commands `quality=4`, to set the quality for graphics to 4 in the three different modes, respectively.

2 Usage

The simplest way to load mglT_EX to a L^AT_EX document is to write the command

$$\backslash usepackage\{mgltex\}$$

in the preamble. Alternatively, one can pass a number of options to the package by means of the syntax

$$\backslash usepackage[\langle options\ list \rangle]\{mgltex\},$$

where *⟨options list⟩* can contain one or more of the following options:

- **draft:** The generated images won't be included in the document. This option is useful when fast compilation of the document is needed.
- **final:** Overrides the **draft** option.
- **on:** To rewrite, recompile and include the changed MGL scripts and/or corresponding graphics.
- **off:** To avoid creation, compilation and/or inclusion of the MGL scripts and corresponding images.
- **comments:** To allow the contents of the `mglcomment` environments to be shown in the \LaTeX document.
- **nocomments:** To avoid showing the contents of the `mglcomment` environments in the \LaTeX document.
- **gray:** To create the MGL graphics in gray-scale mode.
- **color:** To create the MGL graphics in color mode.
- **1x, ..., 9x:** To specify the scale for the creation of graphics (1x is normal scaling, 2x is twice as bigger, etc).
- **0q, ..., 9q:** To specify the quality for the creation of graphics. An info message indicating the characteristics of the chosen quality is printed in the .log file according to the following table:

Quality	Description
0	No face drawing (fastest)
1	No color interpolation (fast)
2	High quality (normal)
3	High quality with 3d primitives (not implemented yet)
4	No face drawing, direct bitmap drawing (low memory usage)
5	No color interpolation, direct bitmap drawing (low memory usage)
6	High quality, direct bitmap drawing (low memory usage)
7	High quality with 3d primitives, direct bitmap drawing (not implemented yet)
8	Draw dots instead of primitives (extremely fast)
9	No drawing (for testing purposes)

- **0v, 1v, 2v:** To set the default variant of arguments for the MGL commands.
- **png, jpg, jpeg:** To export images to a bitmap format.
- **eps, epsz:** To export to uncompressed/compressed vectorial EPS format.

- **bps**, **bpsz**: To export to uncompressed/compressed bitmap EPS format.
- **pdf**: To export to 3D PDF format.
- **tex**: To export to $\text{\LaTeX}/tikz$ document.

If two or more mutually exclusive options are specified, only the last one will be used by $\text{mgl}\text{\TeX}$. For example, if one specifies the options `0q`, `3q` and `8q`—in that order—, then the quality will be set to 8.

Observe the `off` option is similar to the `draft` option, with the exception that `draft` deactivates inclusion of graphics for the $\text{mgl}\text{\TeX}$ and `graphicx` packages simultaneously, while the `off` option only deactivates $\text{mgl}\text{\TeX}$ functionalities (creation and/or inclusion of scripts and graphics), not affecting `graphicx`. This could be useful to recognize which images are created with MGL, and which are only included. Another possible use for this option is to avoid recompilation of scripts when they must be constantly changed until their final version.¹

There are two ways to compile a document with $\text{mgl}\text{\TeX}$: The first way is to run

```
latex --shell-escape <document>.tex
```

three times, since the first run will detect changes in the scripts; the second run will extract the MGL code, execute it and include some of the resulting graphics, while the third run will include the remaining graphics. The second way is to run

```
latex <document>.tex
```

twice to detect changes in MGL code and to extract it, then compile the generated scripts with the program `mglconv` (part of MathGL bundle), and execute `latex <document>.tex` once more to include the graphics.² (More on the recompilation-decision mechanism of $\text{mgl}\text{\TeX}$ can be found in subsection 3.2.)

2.1 Warning for the user

Before we continue the description of the package, it must be pointed out that $\text{mgl}\text{\TeX}$ assumes that the command `\end{<MGL environment>}`, that ends the corresponding `<MGL environment>`, occupies its own physical line of \LaTeX code. So the correct forms of use of environments are the following:

```
\begin{<MGL environment>}
<contents of the environment>
\end{<environment>}
```

and

```
\begin{<MGL environment>}<contents of the environment>
\end{<environment>}
```

¹ $\text{mgl}\text{\TeX}$ has a convenient recompilation-decision algorithm that enables recompilation for changed scripts only (see subsection 3.2).

²If no changes were made to scripts intended to create graphics, only one \LaTeX run is needed.

The following form will cause problems:

```
\begin{MGL environment}\contents of the environment\end{MGL
environment}
```

`mgITEX` depends on the `verbatim` package to define its environments. One of the characteristics of `verbatim` is that it transcripts everything contained between the beginning and the end of an environment, including spaces before an `\end{MGL environment}` command. This should not be a problem, except for the fact that `mgITEX` has a mechanism to detect changes in MGL scripts in order to recompile them (see subsection 3.2), and the mentioned spaces in the scripts and their counterparts in the `LATEX` document can't be recognized properly as identical when compared, causing the package to recompile the scripts even when they haven't changed, rendering the mechanism useless.³ In order to avoid this glitch, the facilities provided by `verbatim` have been adapted to ignore everything before `\end{MGL environment}`, including spaces and, unfortunately, MGL code.

It should also be pointed out that the default behavior of the `verbatim` package makes the following form to ignore the `<text>` after the `\end{MGL environment}`, issuing a warning.

```
\begin{MGL environment}
<contents of the environment>
\end{MGL environment}<text>
```

2.2 Environments for MGL code embedding

`mg1` The main environment defined by `mgITEX` is `mg1`. It extracts its contents to a main script, called `<main_script_name>.mg1`, where `<main_script_name>` stands for a name specified by the user with the `\mg1name` command (explained later), or the name of the `LATEX` document being executed otherwise; this script is compiled, and the corresponding image is included.

```
\begin{mg1}[<key-val list>]
  <MGL code>
\end{mg1}
```

Here, `<key-val list>` can have the following optional arguments:

- **bb, bblx, bblly, bburx, bbury, natwidth, natheight, hiresbb, viewport, trim, angle, origin, width, height, totalheight, keepaspectratio, scale, clip, draft, type, ext, read, command:** These are the same options of the `\includegraphics` command from the `graphicx` package.
- **gray:** Can be used to activate (`gray=on` or `gray=1`) or deactivate (`gray=off` or `gray=0`) gray-scale mode privately (only for the current graphic).

³It is currently unknown for the author why this spaces aren't detected properly. Help would be appreciated.

- **mglscale:** Any positive value for this option is used to physically scale the resulting image file, i.g., `mglscale=2` will create an image file twice as bigger.
- **quality:** Sets the quality of the current graphic. Valid values are integers between 0 and 9.
- **variant:** Sets the variant of argument for the commands in the current script.
- **imgext:** Can be used to set the extension for the current image.
- **label:** Can be used to indicate a name for the corresponding graphic (otherwise, an automatic naming will be applied)

mgladdon This environment adds its contents to the document's main script, but it doesn't produce any image. It doesn't require any kind of arguments. It is useful to add "complementary code", like instructions to load dynamic libraries, set default size for the graphics, etc.

```
\begin{mgladdon}
  \langle MGL code \rangle
\end{mgladdon}
```

mglfunc Is used to define MGL functions within the document's main script. It takes one mandatory argument, which is the name of the function, plus one optional argument, which specifies the number of arguments of the function (the default is 0). The environment needs to contain only the body of the function, since the lines "`func \langle function_name \rangle \langle number of arguments \rangle`" and "`return`" are appended automatically at the beginning and the end, respectively. The resulting code is written at the end of the document's main script, after the `stop` command, which is also written automatically.

```
\begin{mglfunc}[\langle number of arguments \rangle]{\langle function\_name \rangle}
  \langle MGL function body \rangle
\end{mglfunc}
```

mglcode It has the same function as the `mgl` environment, but the corresponding code is written to a separate script, whose name is specified as mandatory argument. It accepts the following optional arguments:

- **bb, bblx, bblly, bburx, bbury, natwidth, natheight, hiresbb, viewport, trim, angle, origin, width, height, totalheight, keepaspectratio, scale, clip, draft, type, ext, read, command:** These are the same options of the `\includegraphics` command from the `graphicx` package.
- **gray:** Can be used to activate (`gray=on` or `gray=1`) or deactivate (`gray=off` or `gray=0`) gray-scale mode privately (only for the current graphic).

- **mglscale:** Any positive value for this option is used to physically scale the resulting image file, i.g., `mglscale=2` will create an image file twice as bigger.
- **quality:** Sets the quality of the current graphic. Valid values are integers between 0 and 9.
- **variant:** Sets the variant of argument for the commands in the current script.
- **imgext:** Can be used to set the extension for the current image.

```
\begin{mglcode}[\langle key-val list \rangle]{\langle script_name \rangle}
\langle MGL code \rangle
\end{mglcode}
```

mglscript The code within `mglscript` is written to a script whose name is specified as mandatory argument, but no image is produced. It is useful for creation of MGL scripts which can be later post-processed by another package, like `listings` or `pygments`.

```
\begin{mglscript}{\langle script_name \rangle}
\langle MGL code \rangle
\end{mglscript}
```

mglsetupscript This is used to create a common “setup” script to define constants, parameters, etc. that will be available to the others.

```
\begin{mglsetupscript}
\langle MGL code \rangle
\end{mglsetupscript}
```

If called more than once, it will overwrite the setup code. Also note that it should be used only to define constants, parameters and things like that, but not graphical objects like axis or grids, because the `mgl` environment clears every graphical object before creating the image.⁴

For example, one could write

```
\begin{mglsetupscript}
define gravity 9.81 # [m/s^2]
\end{mglsetupscript}
```

to make the constant *gravity* available to every script.

mglcommon This is a synonym for the `mglsetupscript` environment. It is and will always be kept in `mglTEX` for backwards compatibility with older versions of the package, but its use is *deprecated*.

⁴This problem occurs only with the `mgl` environment, so you could use `mglcommon` to create many graphics with the same axis, grid, etc., with environments like `mglcode`, but in that case the best option is to use the `mglsetup` environment together with the `\mglplot` command.

```

\begin{mglcommon}
    \langle MGL code \rangle
\end{mglcommon}

```

2.3 Fast creation of graphics

`mglTeX` defines a convenient way to work with many graphics that have exactly the same settings (same rotation angles, same type of grid, same lighting, etc.): instead of writing repetitive code every time it's needed, it can be stored inside a `mglsetup` environment, and then can be used when needed with the `\mglplot` command.

`mglsetup` This environment is defined as a special case of the `mglfunc` environment. It accepts one mandatory argument, which is a keyword (name) associated to the corresponding block of code (MGL function body).

```

\begin{mglsetup}{\langle key\_word \rangle}
    \langle MGL code \rangle
\end{mglsetup}

```

`\mglplot` This command is used for fast generation of graphics with default settings, and can be used in parallel with the `mglsetup` environment. It accepts one mandatory argument which consists of MGL instructions, separated by the symbol “:”, and can span through various text lines. It accepts the following optional arguments:

- **bb, bblx, bblly, bburx, bbury, natwidth, natheight, hiresbb, viewport, trim, angle, origin, width, height, totalheight, keepaspectratio, scale, clip, draft, type, ext, read, command:** These are the same options of the `\includegraphics` command from the `graphicx` package.
- **gray:** Can be used to activate (`gray=on` or `gray=1`) or deactivate (`gray=off` or `gray=0`) gray-scale mode privately (only for the current graphic).
- **mglscale:** Any positive value for this option is used to physically scale the resulting image file, e.g., `mglscale=2` will create an image file twice as bigger.
- **quality:** Sets the quality of the current graphic. Valid values are integers between 0 and 9.
- **variant:** Sets the variant of argument for the commands in the current script.
- **imgext:** Can be used to set the extension for the current image.
- **label:** Can be used to indicate a name for the corresponding graphic (otherwise, an automatic naming will be applied)

- **setup:** Specifies a keyword associated to a `mglsetup` block, which will be executed before the code in the mandatory argument.
- **separator:** Specifies a text symbol that will break the code in the mandatory argument into a new physical line in the main script every time is encountered.

$$\backslash\mathrm{mglplot}[\langle\textit{key-val list}\rangle]\{\langle\textit{MGL code}\rangle\}$$

2.4 Verbatim-like environments

The main purpose of these environments is to typeset their contents to the $\mathrm{L}^{\mathrm{A}}\mathrm{T}_{\mathrm{E}}\mathrm{X}$ document, elegantly separated from the rest of the text. They have two versions: an unstarred version which can be listed later with the `\listofmglscripts` command (explained later), and a starred version which won't be listed.

Although these environments are intended to mimic the behavior of the `verbatim` environment from $\mathrm{L}^{\mathrm{A}}\mathrm{T}_{\mathrm{E}}\mathrm{X}$, there is an important difference, namely, long lines will be broken when the page margin is reached. This intended behavior is set because a language like MGL can easily have very long lines of code, like textual formulas, vectors input as lists of values, etc. Of course, no hyphenation will be performed, but the code will be indented in the second, third, etc. continuation lines by an amount specified by `\mglbreakindent` (explained later).

`mglblock` Besides typesetting its contents to the document, `mglblock` creates a script
`mglblock*` whose name is specified as mandatory argument. It accepts one optional argument:

- **lineno:** Used to activate (`lineno=true` or simply `lineno`) or deactivate (`lineno=false`) line numbering inside the environment.

By default, each line of code is numbered.

$$\begin{array}{l} \backslash\mathrm{begin}\{\mathrm{mglblock}\}[\langle\textit{key-val list}\rangle]\{\langle\textit{script_name}\rangle\} \\ \qquad\qquad\qquad\langle\textit{MGL code}\rangle \\ \backslash\mathrm{end}\{\mathrm{mglblock}\} \end{array}$$

$$\begin{array}{l} \backslash\mathrm{begin}\{\mathrm{mglblock*}\}[\langle\textit{key-val list}\rangle]\{\langle\textit{script_name}\rangle\} \\ \qquad\qquad\qquad\langle\textit{MGL code}\rangle \\ \backslash\mathrm{end}\{\mathrm{mglblock*}\} \end{array}$$

The output looks like this:

example_script.mgl

```

1. new x 50 40 '0.8*sin(pi*x)*sin(pi*(y+1)/2)'
2. new y 50 40 '0.8*cos(pi*x)*sin(pi*(y+1)/2)'
3. new z 50 40 '0.8*cos(pi*(y+1)/2)'
```

```

4. title 'Parametric surface' : rotate 50 60 : box
5. surf x y z 'BbwrR'

```

`mglverbatim` This environment only typesets its contents to the L^AT_EX document without
`mglverbatim*` creating any script. It accepts two optional arguments

- **lineno:** Used to activate (`lineno=true` or simply `lineno`) or deactivate (`lineno=false`) line numbering inside the environment.
- **label:** Used to specify a name associated to the corresponding code.

The default behavior is to number each line of code.

```

\begin{mglverbatim}[\langle key-val list \rangle]
    \langle MGL code \rangle
\end{mglverbatim}

```

```

\begin{mglverbatim*}[\langle key-val list \rangle]
    \langle MGL code \rangle
\end{mglverbatim*}

```

The output looks like this without label:

```

1. new x 50 40 '0.8*sin(pi*x)*sin(pi*(y+1)/2)'
2. new y 50 40 '0.8*cos(pi*x)*sin(pi*(y+1)/2)'
3. new z 50 40 '0.8*cos(pi*(y+1)/2)'
4. title 'Parametric surface' : rotate 50 60 : box
5. surf x y z 'BbwrR'

```

If a `label` is specified, the output will look exactly as that of the `mglblock` environment.

`mglcomment` This environment is used to embed comments. The comment won't be visible in the case of the user passing the option `nocomments` to the package, but it will be typeset *verbatim* to the document if the user passes the option `comments`.

```

\begin{mglcomment}
    \langle Comment \rangle
\end{mglcomment}

```

If the user requests visible comments, this will result in the appearance of something like the following in the L^AT_EX document:

```

< ----- mglTeX comment ----- >
    This is a mglTeX comment
< ----- mglTeX comment ----- >

```

2.5 Working with external scripts

`mglTeX` provides convenient ways to deal with external scripts (scripts that exist in their own files, independently of the `LATEX` document, like scripts sent by a colleague or created before the actual writing of the `LATEX` document, etc). It must be noted, however, that the package works on the supposition that these scripts are in their final version, so no change detection is performed on them. If a external script is changed, the corresponding graphic must be manually deleted in order to force recompilation.

`\mglgraphics` This command takes the name of an external MGL script as mandatory argument, which will be automatically executed, and the resulting image will be included. The same optional arguments accepted by this command are:

- **bb, bblx, bblly, bburx, bbury, natwidth, natheight, hiresbb, viewport, trim, angle, origin, width, height, totalheight, keepaspectratio, clip, draft, type, ext, read, command:** These are the same options of the `\includegraphics` command from the `graphicx` package.
- **gray:** Can be used to activate (`gray=on` or `gray=1`) or deactivate (`gray=off` or `gray=0`) gray-scale mode privately (only for the current graphic).
- **mglscale:** Any positive value for this option is used to physically scale the resulting image file, i.g., `mglscale=2` will create an image file twice as bigger.
- **quality:** Sets the quality of the current graphic. Valid values are integers between 0 and 9.
- **variant:** Sets the variant of argument for the commands in the current script.
- **imgext:** Can be used to set the extension for the current image.
- **path:** Can be used to specify the location of the script.

`\mglinclude` This command is the equivalent of the `mglverbatim` environment for external
`\mglinclude*` scripts. It takes one mandatory argument, which is the name of a MGL script, which will be automatically transcript *verbatim* on the `LATEX` document. It accepts the following optional arguments:

- **lineno:** Used to activate (`lineno=true` or simply `lineno`) or deactivate (`lineno=false`) line numbering inside the environment.
- **path:** Can be used to specify the location of the script.

The unstarred version of this command will be listed if `\listofmglscripts` is used (explained later), while the starred version won't.

$$\backslash\mathrm{mglinclude}[\langle\mathit{key-val\ list}\rangle]\{\langle\mathit{script_name}\rangle\}$$

$$\backslash\mathrm{mglinclude}*\{\langle\mathit{script_name}\rangle\}[\langle\mathit{key-val\ list}\rangle]$$

2.6 Additional commands

`\listofmglscripts` Opens a new section or chapter—depending on the L^AT_EX class used—, where all the scripts that have been transcript in the document with the unstarred versions of the `mglblock` and `mglverbatim` environments, and the `\mglinclude` command, are listed. In case a `mglverbatim` is used, but no `label` is specified, the default name to display is specified by the `\mglverbatimname` macro (explained later), otherwise, the corresponding label is typeset.

`\listofmglscripts`

The output is like this:

List of MGL scripts

1. `example_script.mgl` 10
2. (Unnamed MGL verbatim script) 11

`\mglTeX`
`\mglTeX*`

This command just pretty-prints the name of the package, i.e., the logo:

mglT_EX

The starred version will also print the version in a coherent manner.

`\mglTeX`

`\mglTeX*`

In an environment where the typesetting of the logo is impossible (a text editor, for instance), it can (and should) be replaced by “mglTeX”.

2.7 Local settings commands

These commands are intended to be equivalent to the package options, but with a local-only effect, meaning that the new settings are applied from the point these commands are used onward.

`\mglswitch` This command is equivalent to the package options `on` and `off`, depending on the argument passed.

`\mglswitch{⟨off|on|0|1⟩}`

Observe that `\mglswitch{on}` and `\mglswitch{off}` can be used to save time when writing a document, wrapping a section with them, avoiding recompilation of the corresponding scripts.

`\mglcomments` This command is equivalent to the package options `comments` and `nocomments`, depending on the argument passed.

$$\backslash\mathrm{mglcomments}\{\langle\mathit{off}|\mathit{on}|0|1\rangle\}$$

`\mglgray` It is equivalent to the package options `gray` and `color`, depending on the argument passed.

$$\backslash\mathrm{mglgray}\{\langle\mathit{off}|\mathit{on}|0|1\rangle\}$$

`\mglscale` Can be used to specify the default scaling for the creation of MGL graphics (1 is normal scaling, 2 is twice as bigger, etc.).

$$\backslash\mathrm{mglscale}\{\langle x : x > 0 \rangle\}$$

`\mglquality` The default quality for the creation of MGL graphics can be specified locally with this command. An info message will be printed in the `.log` file indicating the characteristics of the chosen value, according to the following table:

Quality	Description
0	No face drawing (fastest)
1	No color interpolation (fast)
2	High quality (normal)
3	High quality with 3d primitives (not implemented yet)
4	No face drawing, direct bitmap drawing (low memory usage)
5	No color interpolation, direct bitmap drawing (low memory usage)
6	High quality, direct bitmap drawing (low memory usage)
7	High quality with 3d primitives, direct bitmap drawing (not implemented yet)
8	Draw dots instead of primitives (extremely fast)
9	No drawing (for testing purposes)

If a non available quality is chosen, it will be changed to 2 (the default), and a warning message will be issued for the user.

$$\backslash\mathrm{mglquality}\{\langle 0|1|\dots|9\rangle\}$$

`\mglvariant` It is useful to set the default variant of arguments for MGL commands.

$$\backslash\mathrm{mglvariant}\{\langle 0|1|\dots\rangle\}$$

`\mglimgext` Can be used to specify the extension to save graphics.

$$\backslash\mathrm{mglimgext}\{\langle\mathit{image\ extension}\rangle\}$$

`\mglname` If used in the preamble of the document this commands just sets the name of the. If used after the `\begin{document}` command, it will force the closure of the current main script, create the corresponding graphics, and start a new main script with the specified name.

$$\backslash\mathrm{mglname}\{\langle main_script_name \rangle\}$$

The use of this command is encouraged when writing large documents, like books or thesis, to create a main script per document block (section, chapter, part, etc.). Since the `mgl` environment and the `\mglplot` command use an internal counter to automatically name scripts, unless the `label` option is used; if a new script is added this way to the document, it will alter the original numbering, causing `mglTeX` to recompile the scripts from that point on (for more details, read subsection 3.2). If the `\mglname` command is used, only the scripts of the current document block will be recompiled.

2.8 Advanced settings commands

Although `mglTeX` is completely functional without any further set up, there are some parameters of its behavior that could be useful to modify. The following commands must be used in the preamble of the document only, since the first MGL script is created at the moment of the `\begin{document}` command, and otherwise they could create weird errors during compilation; trying to use them somewhere else will produce an error.

`\mgldir` This command can be used to specify the main working directory for `mglTeX`. Inside it, the scripts, backup files and graphics will be created, or can be separated inside subdirectories. This is useful, for example, to avoid many scripts and graphics from polluting the directory where the `LaTeX` document is.

$$\backslash\mathrm{mgldir}\{\langle main_directory \rangle\}$$

`\mglscripstdir` It specifies the subdirectory inside `mglTeX`'s $\langle main_directory \rangle$ where the MGL scripts will be created.

$$\backslash\mathrm{mglscripstdir}\{\langle scripts_subdirectory \rangle\}$$

`\mglgraphicsdir` It specifies the subdirectory inside `mglTeX`'s $\langle main_directory \rangle$ where the MGL graphics will be created, including the ones from external scripts (not embedded inside the `LaTeX` document).

$$\backslash\mathrm{mglgraphicsdir}\{\langle graphics_subdirectory \rangle\}$$

`\mglbackupsdir` It specifies the subdirectory inside `mglTeX`'s $\langle main_directory \rangle$ where backups for the MGL scripts will be created.

$$\backslash\mathrm{mglbackupsdir}\{\langle backups_subdirectory \rangle\}$$

The above commands can be used in various combinations. For example, if none of them is used, the scripts, graphics and backups will be created inside the same path where the `LaTeX` document is being compiled; if only `\mgldir` is used, they will be created inside $\langle main_directory \rangle$; if only

`\mgldir` and `\mglscripstdir` are used, the scripts will be created inside $\langle main_directory \rangle \langle scripts_subdirectory \rangle$, while the graphics and backups will be inside $\langle main_directory \rangle$ only; if `\mgldir` isn't used, but the other commands are, the $\langle scripts_subdirectory \rangle$, $\langle graphics_subdirectory \rangle$ and $\langle backups_subdirectory \rangle$ folders will be inside the folder where the L^AT_EX document is being compiled.

`\mglpaths`

In case of having external MGL scripts, it is not recommended to place them inside the same location as where the embedded scripts are extracted, since they could be accidentally overwritten or deleted by the user; they should be separated in a folder which can be specified in the form of an absolute or relative path using this command.

$$\backslash\mathrm{mglpaths}\{\langle directory\ list \rangle\}$$

This command can be used many times or can be used to specify many paths at once. In the case of using it many times, each call will add the new directory or directories to the list of searching paths.

`\mglsettings`

This command has been added for the confort of the user, since it handles all of the basic and advanced settings of mglT_EX, as an alternative to some package options and commands. It takes one mandatory argument which should be a list of $\langle key \rangle = \langle value \rangle$ pairs, according to the following table:

Key	Value	Description
dir	$\langle main_directory \rangle$	The main working directory
scripstdir	$\langle scripts_subdirectory \rangle$	The subdirectory for scripts creation
graphicsdir	$\langle graphics_subdirectory \rangle$	The subdirectory for graphics creation
backupsdir	$\langle backups_subdirectory \rangle$	The subdirectory for backups creation
paths	$\langle directory\ list \rangle$	Paths to external scripts
switch	$\langle off on 0 1 \rangle$	Turn off/on mglT _E X
comments	$\langle off on 0 1 \rangle$	Turn off/on comments
gray	$\langle off on 0 1 \rangle$	Turn off/on gray-scale mode
mglscale	$\langle x : x > 0 \rangle$	Scale for creation of graphics
quality	$\langle 0 1 \dots 9 \rangle$	Quality for creation of graphics
variant	$\langle 0 1 \dots \rangle$	Variant of arguments for MGL commands
imgext	$\langle image\ extension \rangle$	Extension for creation of graphics

$$\backslash\mathrm{mglsettings}\{\langle key\text{-}val\ list \rangle\}$$

2.9 User-definable macros

There are macros that the user is allowed to modify in order to customize some aspects of the behavior of mglT_EX. For example, if writing in spanish, french or russian, the user would like to modify the name of the common script, the words typeset in the separator lines of mglT_EX comments, the name of the list of MGL scripts, etc.

`\mglsetupscriptname`

It is the name for the common setup script that takes the contents of the `mglsetupscript` or `mglcommon` environments. The default name is defined by

	<code>\def\mglsetupscriptname{MGL_setup_script}</code>
<code>\mglcommentname</code>	This macro expands to the words typeset before and after a <code>mglTeX</code> comment, in the middle of the separator lines. The default words are set by <code>\def\mglcommentname{\mglTeX{} comment}</code>
<code>\listofmglscriptsname</code>	This is the name of the section/chapter created by the command <code>\listofmglscripts</code> . The default is set by <code>\def\listofmglscriptsname{List of MGL scripts}</code>
<code>\mglverbatimname</code>	This is the default name to be printed in the list of MGL scripts for scripts created with the unstarred version of <code>mglverbatim</code> , for which a <code>label</code> hasn't been specified. The default is <code>\def\mglverbatimname{(Unnamed MGL script)}</code>
<code>\mgllinenostyle</code>	Indicates the style for typesetting the line numbers inside the <code>mglblock</code> and <code>mglverbatim</code> environments, and the <code>\mglinclude</code> command. The default is <code>\def\mgllinenostyle{\footnotesize}</code>
<code>\mgldashwidth</code>	The dashes of the separator lines for the <code>mglcomment</code> environment are contained inside boxes whose width is specified by this macro. For practical purposes, this dimension can be used to increase/decrease the space between the dashes. The default is <code>\mgldashwidth=0.75em</code> It is recommended to use font-dependent units for this dimension, like <code>em</code> , just in case the font is changed later, so it adapts to the new metric. ⁵
<code>\mgllinethickness</code>	It is the thickness of the separator lines for the <code>mglblock</code> and <code>mglverbatim</code> environments, and the <code>\mglinclude</code> command. The default is <code>\mgllinethickness=0.25ex</code> It is also recommended to use font-dependent units for this dimension, like <code>ex</code> .
<code>\mglbreakindent</code>	<code>mglTeX</code> allows line breaking inside verbatim-like environments and commands. When a line of code is broken, <code>\mglbreakindent</code> is the indentation of the second, third, etc. continuation lines. The default is <code>\mglbreakindent=1em</code> Once more, font-dependent units are encourage.

3 Behavior of `mglTeX`

`mglTeX` has many convenient features designed for the comfort of the user, and to reduce the possibility of unintentional malfunction.

⁵A rule of thumb is to use `em` units for horizontal dimensions, and `ex` units for vertical dimensions.

3.1 Creation and inclusion of MGL scripts and graphics

All environments and commands for MGL code embedding check for multiple scripts with the same name. This detection is performed in order to avoid unintentionally overwriting scripts, or creating confusion with different verbatim chunks of code with the same name. If such multiple naming is found a warning will be issued. However, external scripts are supposed to be responsibility of the user, so no detection of multiple naming will be performed on them.

When `mgITEX` is unable to find a graphic that is supposed to include, instead of producing an error, it will warn the user about it, and will display a box in the corresponding position of the document like the one shown in figure 1. Notice that

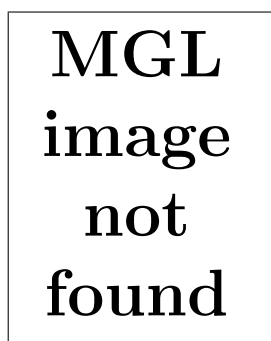


Figure 1: This box is shown by `mgITEX` instead of a graphic that should be included, but can't be found.

the first time or even the second time `LATEX` is executed, many of these boxes will appear in the document, because the first run detects changes on scripts, while the second run creates the graphics, but not all of them are included, until `LATEX` is run for the third time.

Likewise, when a script isn't found, a warning will be issued for the user, and, if that script was meant to be included in the document by a `\mglinclude` command, the box shown in figure 2 will be displayed instead.

When `mgITEX` is `off` no MGL graphics will be generated nor will be included, but instead, a box like the one of figure 3 will be shown.

3.2 Recompile-decision algorithm

`mgITEX` has the builtin capacity of detecting changes in MGL scripts, so that a script is recompiled only when it has changed, not every time `LATEX` is executed. This saves a lot of time, since most of the compilation time of a document is spent on the creation (and conversion to another format, if necessary) of the graphics.

This is how the recompilation-decision is performed: When `mgITEX` finds an environment or command meant to create a script/graphic, it checks if the command `\MGL@@@script` is defined, where *script* is the name of the script. If the command is undefined, this means the script has changed, so the corresponding

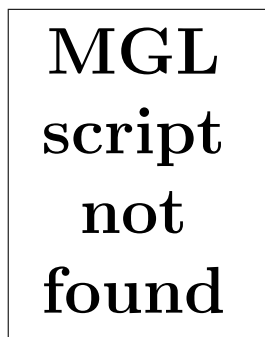


Figure 2: This box is shown by `mgltex` instead of a script that should be included, but can't be found.

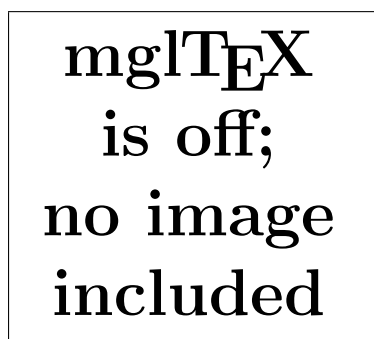


Figure 3: This box is shown instead of an image when `mgltex` is off.

code is transcribed to the file `<script>.mgl`, and the command `\MGL@@@<script>` is defined. If the command is already defined, this means the script has been created on a previous `lATEX` run, so this time the embedded code is compared against the contents of the script; if they are equal, then `\MGL@@@<script>` is defined again, otherwise, it is undefined, so the next `lATEX` run will rewrite/recompile the code. This process is schematically represented in figure 4.

The recompilation-decision mechanism can be fooled, however. The `mgl` environment and `\mgplot` command have the ability to automatically name scripts by means of the use of an internal counter, unless the `label` option is specified. Suppose the user wants to add a new `mgl` environment or `\mgplot` command exactly after the $(n - 1)$ th script, so the n th script will be the newly added, while the old n th will be the new $(n + 1)$ th, and so on, altering the original numbering. This will cause `mgltex` to compare the old n th script with the old $(n + 1)$ th, and so on, deciding they are different, so they will be recompiled.

There are two ways to avoid this problem: The first one is to use the `label` option on the newly arrived; the second is to wrap a complete block of the document with the `\mglswitch{off}` and `\mglswitch{on}` commands, avoiding recompilation and saving time. This last option will avoid the inclusion of the MGL

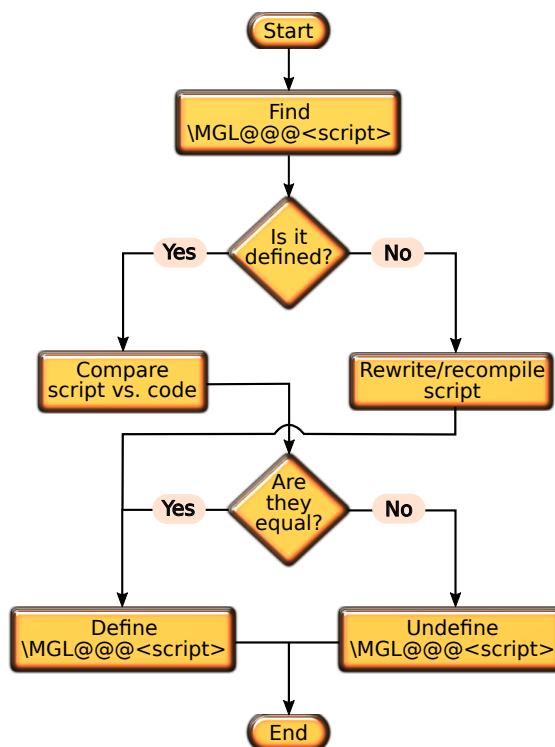


Figure 4: The algorithm used by `mglTeX` to decide which scripts recreate/recompile.

graphics, so it is only recommended in case of the wrapped scripts being in their final version (not needing further modification), so there is no need of updating the corresponding graphics; then, when the document is compiled in its final version, the `\mglswitch{off}` and `\mglswitch{on}` can be removed. However, the most recommended way of proceeding is to use the `\mglname` command to create a separated main script per document block (section, chapter, part, etc.), so that, if a new script disrupts the original numbering, `mglTeX` will recompile only the scripts of the current block.

There are situations when recompilation of a script has to be forced. For example, if the default quality has changed, but the script hasn't, `mglTeX` won't recreate the corresponding graphic by its own initiative, because it won't detect any changes in the code. In order to force recompilation, the image of the corresponding script can be deleted: `mglTeX` will detect this absence in the next `LATEX` run and recompile.

4 Acknowledgements

mg \LaTeX was born as a small personal project. It has grown and mature under the constant suggestions and requests from Prof. Alexey Balakin.

5 Redistributing and modifying

The *source code* of mg \LaTeX (.sty, .dtx, and .ins files) can be redistributed and/or modified under the terms of the GNU General Public License as published by the Free Software Foundation, either version 3 of the License, or (at your option) any later version. The *documentation* of mg \LaTeX (.dvi, .ps, .pdf and other files) is licensed under the Creative Commons Attribution-NonCommercial-ShareAlike 3.0 Unported License.

6 Implementation

This section documents the complete code of mg \LaTeX . It's main purpose is to facilitate the understanding and maintenance of the package's code. For the following, we use “@” in the name of macros the user should not modify; the prefix “MGL” is used to simulate a namespace, so the macros from mg \LaTeX won't interfere with the ones from other packages.

6.1 Initialization

We first define some macros that will serve different purposes on different parts of the package.

<code>\MGL@off</code>	These are used in the command <code>\MGL@test@switch</code> (explained later) to determine
<code>\MGL@on</code>	whether the user has passed one of the options <code>off</code> , <code>on</code> , <code>0</code> or <code>1</code> to a command.
<code>\MGL@zero</code>	1 <code>\def\MGL@off{off}</code>
<code>\MGL@one</code>	2 <code>\def\MGL@on{on}</code>
	3 <code>\def\MGL@zero{0}</code>
	4 <code>\def\MGL@one{1}</code>
 <code>\MGL@test@switch</code>	 It is called by a command to test whether the user has passed the option <code>off</code> , <code>on</code> , <code>0</code> (equivalent to <code>off</code>) or <code>1</code> (equivalent to <code>on</code>); if the option is correct, it is replaced by its equivalent, otherwise, a warning is issued. It takes two arguments: the first one is the option to test, the second one is the name of the command calling this macro.
	5 <code>\def\MGL@test@switch#1#2{%</code>
	6 <code> \def\MGL@temp@a{#1}%</code>
	7 <code> \ifx\MGL@temp@a\MGL@on%</code>
	8 <code> \else\ifx\MGL@temp@a\MGL@off%</code>
	9 <code> \else\ifx\MGL@temp@a\MGL@one%</code>
	10 <code> \def\MGL@temp@a{on}%</code>
	11 <code> \else\ifx\MGL@temp@a\MGL@zero%</code>

```

12     \def\MGL@temp@a{off}%
13     \else%
14         \PackageWarning{mgltex}{%
15             Unrecognizable option "#1" passed to command \protect#2%
16         }%
17     \fi\fi\fi\fi%
18 }

```

\MGL@TeX@ext Is used in the command `\MGL@includegraphics` (explained later) to determine whether the user has chosen to save graphics in L^AT_EX/Tikz format.

```

19 \def\MGL@TeX@ext{.tex}

```

The macros `\MGL@switch@on` and `\MGL@switch@off` are called when the package options `on` and `off` are passed, respectively, or when the commands `\mglswitch{on}` and `\mglswitch{off}` are used, respectively.

\MGL@switch@on (Re)defines the commands to open, read, write and close scripts, and the command that includes MGL graphics.

```

20
21 \def\MGL@switch@on{%

```

\MGL@openout Opens a script for writing. It takes two arguments, the first being an output stream number, allocate by `\newwrite` (T_EX command), and the second being the path to the script.

```

22     \def\MGL@openout##1##2{%
23         \immediate\openout##1="##2"%
24     }%

```

\MGL@openin Opens a script for reading. It takes two arguments, the first being an input stream number, allocate by `\newread` (T_EX command), and the second being the path to the script.

```

25     \def\MGL@openin##1##2{%
26         \immediate\openin##1="##2"%
27     }%

```

\MGL@write Writes to a script opened with `\MGL@openout`. Its first argument is the output stream number of the script, and the second is the text to write.

```

28     \def\MGL@write##1##2{%
29         \immediate\write##1{##2}%
30     }%

```

\MGL@read Reads one line from a script opened with `\MGL@openin`. Its first argument is the input stream number of the script, and the second is a variable where the read text will be stored. The variable is first initialized as empty; if the end of the script has been reached, then there is nothing to read, so it remains empty; otherwise, one line is read and stored in the variable, locally suppressing any end line character (`\endlinechar=-1`).

```

31     \def\MGL@read##1##2{%

```

```

32   \def##2{}%
33   \ifeof##1\else%
34     \bgroup%
35     \endlinechar=-1%
36     \immediate\global\read##1 to ##2%
37     \egroup%
38   \fi%
39 }%

```

`\MGL@closeout` Closes a script opened with `\MGL@openout`, whose stream number is passed as argument.

```

40   \def\MGL@closeout##1{%
41     \immediate\closeout##1%
42   }

```

`\MGL@closein` Closes a script opened with `\MGL@openin`, whose stream number is passed as argument.

```

43   \def\MGL@closein##1{%
44     \immediate\closein##1%
45   }

```

`\MGL@includegraphics` This is a quite sophisticated command. It is in charge of including the graphics created by `mg|TEX`.

```

46   \def\MGL@includegraphics{%

```

First checks if the image exists. Note the `\MGL@dir` and `\MGL@graphics@dir` macros are set by the user with the `\mgldir` and `\mglgraphicsdir` commands, respectively, while `\MGL@script` stores the name of the script—and thus the image—executed, and `\MGL@imgext` is the extension chosen by the user to save the graphics.

```

47   \IfFileExists{\MGL@dir\MGL@graphics@dir\MGL@script\MGL@imgext}{%

```

If the chosen extension is `.tex`, a `LATEX`/Tikz file has been created, which has to be simply included in the document; it will be automatically compiled by `LATEX`. (Observe we use the `\MGL@TeX@ext` macro defined above.)

```

48     \ifx\MGL@imgext\MGL@TeX@ext%
49       \include{\MGL@dir\MGL@graphics@dir\MGL@script\MGL@imgext}%

```

If the chosen extension is not `.tex`, a normal visual image has been created, so the `\includegraphics` command is invoked to deal with it. The options for this command (like `scale`, `angle`, etc.) are stored in the `\MGL@graph@keys` macro, which is defined by every environment or command that creates and compiles MGL scripts, according to the optional arguments the user has passed.

```

50   \else%
51     \expandafter\includegraphics\expandafter[\MGL@graph@keys]{%
52       \MGL@dir\MGL@graphics@dir\MGL@script%
53     }%
54   \fi%
55 }%

```

If the requested image doesn't exist, the issue a warning message for the user, and print a warning framed box ("**MGL image not found**") in the place the image should occupy.

```

56     \PackageWarning{mgltex}{MGL image "\MGL@script" not found}%
57     \fbox{%
58         \centering%
59         \bfseries\Huge%
60         \begin{tabular}{c}MGL\\image\\not\\found\end{tabular}%
61     }%
62 }%
63 }%
```

And here ends the \MGL@switch@on command.

```
64 }
```

\MGL@switch@off (Re)defines the same commands as \MGL@switch@on in such a way they accept the same arguments, but do nothing. The exception is \MGL@includegraphics which, instead of doing nothing, prints a warning framed box ("**mglTeX is off; no image included**").

```

65 \def\MGL@switch@off{%
66     \PackageWarning{mgltex}{mglTeX is off}%
67     \def\MGL@openout##1##2{}%
68     \def\MGL@openin##1##2{}%
69     \def\MGL@write##1##2{}%
70     \def\MGL@read##1##2{}%
71     \def\MGL@closeout##1{}
72     \def\MGL@closein##1{}
73     \def\MGL@includegraphics{%
74         \fbox{%
75             \centering%
76             \bfseries\Huge%
77             \begin{tabular}{c}\mglTeX\\is off;\no image\\included\end{tabular}%
78         }%
79     }%
80 }
```

\MGL@comments@off We will need a boolean switch to activate/deactivate comments later.

```

\MGL@comments@on
81
82 \def\MGL@comments@off{\let\ifMGL@comments@\iffalse}
83 \def\MGL@comments@on{\let\ifMGL@comments@\iftrue}
```

\MGL@gray The commands \MGL@gray@off and \MGL@gray@on simply set the value of \MGL@gray to 0 and 1, respectively; this value will be used later through the -g command line option from mglconv.

```

84
85 \def\MGL@gray@off{\def\MGL@gray{0}}
86 \def\MGL@gray@on{\def\MGL@gray{1}}
```


`\mglgray` Depending on the option passed by the user, it calls `\@MGL@gray@on` or `\@MGL@gray@off`.

```

87 \def\mglgray#1{%
88   \MGL@test@switch{#1}{\mglgray}%
89   \csname @MGL@gray@\MGL@temp@a\endcsname%
90 }

```

`\mglyscale` `\mglyscale` sets the value of the `\MGL@scale` macro, which is used later to specify the default scaling for graphics. It only accepts positive values, otherwise it issues a warning and restarts the scaling to 1. In order to be able to check the validity of the value passed by the user, we first set the `\MGL@scale` macro to that value and test it with the `\ifdim` conditional.⁶ Since this conditional tests dimensions only, the value passed by the user is multiplied by `\p@` (value 1pt), so it can be compared with `\z@` (value 0pt).

```

91
92 \def\mglyscale#1{
93   \ifdim#1\p@>\z@%
94     \def\MGL@scale{#1}%
95   \else%
96     \PackageWarning{mgltex}{%
97       Scaling value of #1\space not allowed; using default (1)%
98     }%
99     \def\MGL@scale{1}%
100   \fi%
101 }

```

`\mglquality` `\mglquality` sets the value of the `\MGL@quality` macro, which is used later to specify the default quality for graphics. It only accepts integer values from 0 to 8 (the only ones defined by `MathGL`), otherwise it issues a warning and restarts to 2 (the default for `MathGL`). In order to be able to check the validity of the value passed by the user, we first set the `\MGL@quality` macro to that value and test it with the `\ifcase` conditional; if the value is valid, we print an info message to the `.log` file about the characteristics of the chosen quality, but if it is invalid, we issue a warning and overwrite `\MGL@scale` to 2.

```

102
103 \def\mglquality#1{%
104   \def\MGL@quality{#1}%
105   \ifcase\MGL@quality%
106     \PackageInfo{mgltex}{%
107       Quality 0: No face drawing (fastest)%
108     }%
109   \or%
110     \PackageInfo{mgltex}{%
111       Quality 1: No color interpolation (fast)%
112     }%
113   \or%
114     \PackageInfo{mgltex}{%

```

⁶We can't use `\ifnum` here because it only accepts integer values.

```

115     Quality 2: High quality (normal)%
116 }%
117 \or%
118 \PackageInfo{mgltex}{%
119     Quality 3: High quality with 3d primitives (not implemented yet)%
120 }%
121 \or%
122 \PackageInfo{mgltex}{%
123     Quality 4: No face drawing, direct bitmap drawing
124     (low memory usage)%
125 }%
126 \or%
127 \PackageInfo{mgltex}{%
128     Quality 5: No color interpolation, direct bitmap drawing
129     (low memory usage)%
130 }%
131 \or%
132 \PackageInfo{mgltex}{%
133     Quality 6: High quality, direct bitmap drawing (low memory usage)%
134 }%
135 \or%
136 \PackageInfo{mgltex}{%
137     Quality 7: High quality with 3d primitives, direct bitmap drawing %
138     (not implemented yet)%
139 }%
140 \or%
141 \PackageInfo{mgltex}{%
142     Quality 8: Draw dots instead of primitives (extremely fast)%
143 }%
144 \or%
145 \PackageInfo{mgltex}{%
146     Quality 9: No drawing (for testing purposes)%
147 }%
148 \else%
149 \PackageWarning{mgltex}{%
150     Quality #1 not available; using default (2)%
151 }%
152 \def\MGL@quality{2}%
153 \fi%
154 }

```

`\mglvariant` `\mglvariant` sets the value of the `\MGL@variant` macro, which is passed later to `mglconv` through its `-v` command line option. It only accepts non-negative integer, otherwise it issues a warning and restarts to 0 (the default for `MathGL`). In order to be able to check the validity of the value passed by the user, we use the `\ifnum` conditional; if the value is invalid we issue a warning and overwrite `\MGL@variant` to 0.

```

155
156 \def\mglvariant#1{%

```

```

157 \def\MGL@variant{#1}%
158 \ifnum\MGL@variant<0%
159   \PackageWarning{mgltex}{%
160     Variant #1 not allowed; using default (0)%
161   }%
162   \def\MGL@variant{0}%
163 \fi%
164 }

```

Now we declare the options `final` and `draft`, which are simply passed to the `graphicx` package.

```

165
166 \DeclareOption{draft}{%
167   \PassOptionsToPackage{\CurrentOption}{graphicx}%
168 }
169 \DeclareOption{final}{%
170   \PassOptionsToPackage{\CurrentOption}{graphicx}%
171 }

```

The rest of the package options just call an adequate command or set an adequate value for a macro.

```

172
173 \DeclareOption{on}{\MGL@switch@on}
174 \DeclareOption{off}{\MGL@switch@off}
175
176 \DeclareOption{nocomments}{\@MGL@comments@off}
177 \DeclareOption{comments}{\@MGL@comments@on}
178
179 \DeclareOption{gray}{\MGL@gray@on}
180 \DeclareOption{color}{\MGL@gray@off}
181
182 \DeclareOption{1x}{\def\MGL@scale{1}}
183 \DeclareOption{2x}{\def\MGL@scale{2}}
184 \DeclareOption{3x}{\def\MGL@scale{3}}
185 \DeclareOption{4x}{\def\MGL@scale{4}}
186 \DeclareOption{5x}{\def\MGL@scale{5}}
187 \DeclareOption{6x}{\def\MGL@scale{6}}
188 \DeclareOption{7x}{\def\MGL@scale{7}}
189 \DeclareOption{8x}{\def\MGL@scale{8}}
190 \DeclareOption{9x}{\def\MGL@scale{9}}
191
192 \DeclareOption{0q}{\def\MGL@quality{0}}
193 \DeclareOption{1q}{\def\MGL@quality{1}}
194 \DeclareOption{2q}{\def\MGL@quality{2}}
195 \DeclareOption{3q}{\def\MGL@quality{3}}
196 \DeclareOption{4q}{\def\MGL@quality{4}}
197 \DeclareOption{5q}{\def\MGL@quality{5}}
198 \DeclareOption{6q}{\def\MGL@quality{6}}
199 \DeclareOption{7q}{\def\MGL@quality{7}}
200 \DeclareOption{8q}{\def\MGL@quality{8}}

```

```

201 \DeclareOption{9q}{\def\MGL@quality{9}}
202
203 \DeclareOption{0v}{\def\MGL@variant{0}}
204 \DeclareOption{1v}{\def\MGL@variant{1}}
205 \DeclareOption{2v}{\def\MGL@variant{2}}

\MGL@imgext The following options set the default graphics extension, which is stored in the
\MGL@imgext macro for later use.

206
207 \DeclareOption{eps}{\def\MGL@imgext{.eps}}
208 \DeclareOption{epsz}{\def\MGL@imgext{.epsz}}
209 \DeclareOption{epsgz}{\def\MGL@imgext{.eps.gz}}
210 \DeclareOption{bps}{\def\MGL@imgext{.bps}}
211 \DeclareOption{bpsz}{\def\MGL@imgext{.bpsz}}
212 \DeclareOption{bpsgz}{\def\MGL@imgext{.bps.gz}}
213 \DeclareOption{pdf}{\def\MGL@imgext{.pdf}}
214 \DeclareOption{png}{\def\MGL@imgext{.png}}
215 \DeclareOption{jpg}{\def\MGL@imgext{.jpg}}
216 \DeclareOption{jpeg}{\def\MGL@imgext{.jpeg}}
217 \DeclareOption{gif}{\def\MGL@imgext{.gif}}
218 \DeclareOption{tex}{\def\MGL@imgext{.tex}}

Any other option passed by the user is invalid, so an error message is issued.

219
220 \DeclareOption*{\@unknownoptionerror}

We now declare the default package options, and, finally, process the options
the user specifies in the order they are introduced.

221
222 \ExecuteOptions{final,on,nocomments,color,1x,2q,0v,eps}
223 \ProcessOptions*

\MGL@dir This is the  $\text{mg}\text{\TeX}$  main working directory. By default, it is defined to empty, so
it points to the path of the  $\text{\LaTeX}$  document.

224
225 \def\MGL@dir{}

\MGL@scripts@dir The subdirectory inside \MGL@dir where all MGL scripts will be created.

226 \def\MGL@scripts@dir{}

\MGL@graphics@dir The subdirectory inside \MGL@dir where all MGL graphics will be created.

227 \def\MGL@graphics@dir{}

\MGL@backups@dir The subdirectory inside \MGL@dir where all backups of scripts will be created.

228 \def\MGL@backups@dir{}

\MGL@paths This is a list of paths where extracted and external scripts will be searched for by
the \mggraphics and \mginclude commands. Since extracted scripts are cre-
ated inside \MGL@dir\MGL@scripts@dir and \MGL@dir\MGL@backups@dir, this
directories are included.

```

```

229 \def\MGL@paths{\MGL@dir\MGL@scripts@dir,\MGL@dir\MGL@backups@dir}

\MGL@main@script@name This macro stores the name of the of the document's main script. It is initialized
to the name of the LATEX document.
230
231 \edef\MGL@main@script@name{\jobname}

We set some additional staff that will be used later.

\MGL@main@stream The output stream for the document's main script.
232
233 \newwrite\MGL@main@stream

\MGL@out@stream The output stream for scripts other than the main one.
234 \newwrite\MGL@out@stream

\MGL@in@stream The input stream for scripts other than the main one.
235 \newread\MGL@in@stream

MGL@script@no The internal counter used by environments like mgl and commands like \mglplot
to automatically name scripts.
236 \newcounter{MGL@script@no}

MGL@line@no The counter used for verbatim-like environments and commands to numerate the
lines of code.
237 \newcounter{MGL@line@no}

MGL@verb@no The counter used to numerate verbatim-written scripts with the \listofmglscripts
command.
238 \newcounter{MGL@verb@no}

\MGL@list@script@ The boolean switch used to determine whether to add a verbatim-written script
to the list of MGL scripts.
239 \newif\if\MGL@list@script@

\l\MGL@script The style for the leaders associating script name and page number in the list of
MGL scripts.
240 \def\l\MGL@script{\@dottedtocline{1}{0em}{1.5em}}

mglTEX requires the keyval package to define  $\langle key \rangle = \langle value \rangle$  options for the en-
vironments and commands; the graphicx package apportos the facilities for inclusion
of graphics; the ifpdf package is used to determine whether the user is compiling
to pdf or not when indicating the default graphics extensionsthe verbatim package
is used as engine for the environments.
241
242 \RequirePackage{keyval}
243 \RequirePackage{graphicx}
244 \RequirePackage{ifpdf}
245 \RequirePackage{verbatim}

```

The supported graphic extensions are declared. These extensions depend on whether we are compiling to pdf or not, so the `\ifpdf` conditional from the homonym package is used.

```

246 \ifpdf%
247   \DeclareGraphicsExtensions{%
248     .pdf,.png,.jpg,.jpeg,.gif%
249   }%
250 \else%
251   \DeclareGraphicsExtensions{%
252     .eps,.epsz,.eps.gz,.bps,.bpsz,.bps.gz%
253   }%
254 \fi%

```

Finally, the `\verbatim@finish` command from the `verbatim` package is disabled to avoid it from writing a blank line at the end of every script (see subsection 2.1).

```

255 \let\verbatim@finish\relax

```

6.2 Anatomy of environments and commands

Many of the environments and commands defined by `mg|TEX` are based on the same pieces of code. So, in order to avoid repetition of commands, we use the concept of *anatomy of environments and commands*, which is basically the idea of taking repetitive pieces of code and enclose them into macros which can later be used.

\MGL@setkeys This command receives two arguments: a family of $\langle key \rangle = \langle value \rangle$ pairs, like `MGL@keys`, and a list of such pairs. It first cleans the `\MGL@graph@keys` macro, and the process the list of pairs.

```

256
257 \def\MGL@setkeys#1#2{%
258   \def\MGL@graph@keys{}%
259   \setkeys{#1}{#2}%
260 }

```

\MGL@graph@keys The main family of $\langle key \rangle = \langle value \rangle$ pairs is defined. These pairs are common to every environment or command that produces graphics. Most of the $\langle key \rangle$'s are redefinitions of the optional arguments for the `\includegraphics` commands, so they are stored inside the `\MGL@graph@keys` macro, which is later passed to that command as optional argument by `\MGL@includegraphics`.

```

261
262 \define@key\MGL@gr@keys{bb}{%
263   \g@addto@macro\MGL@graph@keys{bb=#1,}%
264 }
265 \define@key\MGL@gr@keys{bbllx}{%
266   \g@addto@macro\MGL@graph@keys{bbllx=#1,}%
267 }
268 \define@key\MGL@gr@keys{bbllx}{%
269   \g@addto@macro\MGL@graph@keys{bbllx=#1,}%

```

```

270 }
271 \define@key{MGL@gr@keys}{bburx}{%
272   \g@addto@macro\MGL@graph@keys{bburx=#1,}%
273 }
274 \define@key{MGL@gr@keys}{bbury}{%
275   \g@addto@macro\MGL@graph@keys{bbury=#1,}%
276 }
277 \define@key{MGL@gr@keys}{natwidth}{%
278   \g@addto@macro\MGL@graph@keys{natwidth=#1,}%
279 }
280 \define@key{MGL@gr@keys}{natheight}{%
281   \g@addto@macro\MGL@graph@keys{natheight=#1,}%
282 }
283 \define@key{MGL@gr@keys}{hiresbb}{%
284   \g@addto@macro\MGL@graph@keys{hiresbb=#1,}%
285 }
286 \define@key{MGL@gr@keys}{viewport}{%
287   \g@addto@macro\MGL@graph@keys{viewport=#1,}%
288 }
289 \define@key{MGL@gr@keys}{trim}{%
290   \g@addto@macro\MGL@graph@keys{trim=#1,}%
291 }
292 \define@key{MGL@gr@keys}{angle}{%
293   \g@addto@macro\MGL@graph@keys{angle=#1,}%
294 }
295 \define@key{MGL@gr@keys}{origin}{%
296   \g@addto@macro\MGL@graph@keys{origin=#1,}%
297 }
298 \define@key{MGL@gr@keys}{width}{%
299   \g@addto@macro\MGL@graph@keys{width=#1,}%
300 }
301 \define@key{MGL@gr@keys}{height}{%
302   \g@addto@macro\MGL@graph@keys{height=#1,}%
303 }
304 \define@key{MGL@gr@keys}{totalheight}{%
305   \g@addto@macro\MGL@graph@keys{totalheight=#1,}%
306 }
307 \define@key{MGL@gr@keys}{keepaspectratio}[true]{%
308   \g@addto@macro\MGL@graph@keys{keepaspectratio=#1,}%
309 }
310 \define@key{MGL@gr@keys}{scale}{%
311   \g@addto@macro\MGL@graph@keys{scale=#1,}%
312 }
313 \define@key{MGL@gr@keys}{clip}[true]{%
314   \g@addto@macro\MGL@graph@keys{clip=#1,}%
315 }
316 \define@key{MGL@gr@keys}{draft}[true]{%
317   \g@addto@macro\MGL@graph@keys{draft=#1,}%
318 }
319 \define@key{MGL@gr@keys}{type}{%

```

```

320 \g@addto@macro\MGL@graph@keys{type=#1,}%
321 }
322 \define@key\MGL@gr@keys{ext}{%
323 \g@addto@macro\MGL@graph@keys{ext=#1,}%
324 }
325 \define@key\MGL@gr@keys{read}{%
326 \g@addto@macro\MGL@graph@keys{read=#1,}%
327 }
328 \define@key\MGL@gr@keys{command}{%
329 \g@addto@macro\MGL@graph@keys{command=#1,}%
330 }

```

The following four $\langle key \rangle = \langle value \rangle$ pairs call the adequate `mg|TEX` command.

```

331 \define@key\MGL@gr@keys{gray}[0]{\mglgray{#1}}
332 \define@key\MGL@gr@keys{mglscale}{\mglscale{#1}}
333 \define@key\MGL@gr@keys{quality}{\mglquality{#1}}
334 \define@key\MGL@gr@keys{variant}{\mglvariant{#1}}

```

`\MGL@imgext` `\MGL@imgext` stores the default extension for the creation of the graphics.

```

335 \define@key\MGL@gr@keys{imgext}{\def\MGL@imgext{.#1}}

```

`\@MGL@lineno@` The only $\langle key \rangle = \langle value \rangle$ pair needed for verbatim-like environments and commands is the one for the `lineno` option, which sets the value of the `\@MGL@lineno@` boolean macro.

```

336
337 \newif\if\MGL@lineno@
338 \define@key\MGL@verb@keys{lineno}[true]{\csname @MGL@lineno@#1\endcsname}

```

`\MGL@codes` This macro changes the category codes of all special characters (like `\`, `$`, etc.) to 12 (other), so they don't have any special meaning and can be processed as normal text. The exception is the new line character (`^M`), which is kept active for compatibility with the `verbatim` package.

```

339
340 \def\MGL@codes{%
341 \let\do\@makeother\dospecials%
342 \catcode'\^I=12%
343 \catcode'\^M\active%
344 }

```

`\MGL@doc@scripts` A macro to store the names of the scripts created or compiled in the document.

```

345
346 \def\MGL@doc@scripts{}

```

`\MGL@set@script@name` `\MGL@set@script@name` receives the name of a script without extension as argument, defines `\MGL@script` as that name, and checks if it has already been created or compiled, by comparing it with the names already stored in `\MGL@doc@scripts`; if it's there already, warns the user. Finally, adds the name of the script to `\MGL@doc@scripts`.


```

347 \def\MGL@set@script@name#1{%
348   \edef\MGL@script{#1}%
349   \@for\MGL@temp@a:=\MGL@doc@scripts\do{%
350     \ifx\MGL@temp@a\MGL@script%
351       \PackageWarning{mgltex}{Multiple MGL scripts named "\MGL@script.mgl"}%
352     \fi%
353   }%
354   \g@addto@macro\MGL@doc@scripts{\MGL@script,}%
355 }

```

`\MGL@unchanged` This command defines the “switch” `\MGL@@@ $\langle script \rangle$` , where $\langle script \rangle$ is passed as argument, which indicates the script $\langle script \rangle.mgl$ has not changed. This command has to be written to the `.aux` file to be preserved from compilation to compilation.

```

356
357 \def\MGL@unchanged#1{%
358   \global\@namedef{MGL@@@#1}{}%
359 }

```

`\MGL@process@script` It checks whether the “switch” `\MGL@@@MGL@script` is undefined, in which case executes its first argument. If the switch is defined, it checks if the corresponding image has been created; if so, it executes its second argument; otherwise, the first one.

```

360
361 \def\MGL@process@script#1#2{%
362   \@ifundefined{MGL@@@MGL@script}{%
363     #1%
364   }{%
365     \IfFileExists{\MGL@dir\MGL@graphics@dir\MGL@script\MGL@imgext}{%
366       #2%
367     }{%
368       #1%
369     }%
370   }%
371 }

```

`\MGL@def@for@loop` `\MGL@def@for@loop` defines the command `\MGL@for` which is similar to the `\@for` command from the L^AT_EX kernel, with the only exception that, instead of iterating over comma-separated lists, it can iterate over lists of items with any kind of separator, which is passed as argument of `\MGL@def@for@loop`. The body of this command is copied from the definition code of `\@for`, extracted from *The L^AT_EX 2_ε Sources* document, replacing the “,” by “#1”. Note that `\MGL@for` is used only by the `\mglplot` command, but it has been included as part of the *anatomy of environments and commands* to keep cleanness because it is quite long code.

```

372
373 \def\MGL@def@for@loop#1{%
374   \long\def\MGL@for##1:=##2\do##3{%
375     \expandafter\def\expandafter\@fortmp\expandafter{##2}%
376     \ifx\@fortmp\empty\else%

```

```

377     \expandafter\MGL@forloop##2#1\@nil#1\@nil\@##1{##3}%
378     \fi%
379 }%
380 \long\def\MGL@forloop##1#1##2#1##3\@##4##5{%
381     \def##4{##1}%
382     \ifx##4\@nnil\else%
383         ##5\def##4{##2}%
384         \ifx##4\@nnil\else%
385             ##5\MGL@iforloop##3\@##4{##5}%
386         \fi%
387     \fi%
388 }%
389 \long\def\MGL@iforloop##1#1##2\@##3##4{%
390     \def##3{##1}%
391     \ifx##3\@nnil%
392         \expandafter\@fornoop%
393     \else%
394         ##4\relax\expandafter\MGL@iforloop%
395     \fi%
396     ##2\@##3{##4}%
397 }%
398 }

```

The default `\MGL@for` loop iterates over \sim J-separated lists, i.e., *<new line>*-character-lists.

```
399 \MGL@def@for@loop{\sim J}
```

`\MGL@compare@code` `\MGL@compare@code` is in charge of comparing the user's MGL code, embedded within $\text{mg}\text{I}\text{T}\text{E}\text{X}$ environments, with its corresponding extracted script. For that purpose, the `\verbatim@processline` and `\verbatim@finish` commands from the `verbatim` package are redefined.

```

400
401 \def\MGL@compare@code#1{%

```

`\MGL@next` This macro is called at the end of environments that use the `\MGL@compare@code` macro, and performs the ending actions of the comparison process, which are closing the `\MGL@in@stream` and writing the `\MGL@unchanged{\MGL@script}` to the `.aux` file. If during the comparison process a difference in the code is found, `\MGL@next` is redefined to only close the `\MGL@in@stream`.

```

402 \def\MGL@next{%
403     \MGL@closein\MGL@in@stream%
404     \MGL@write\@auxout{\string\MGL@unchanged{\MGL@script}}%
405 }%

```

The `\verbatim@processline` command is redefined to read from the input stream to a temporary variable (`\MGL@temp@a`), and compare it with one line of code in the $\text{I}\text{A}\text{T}\text{E}\text{X}$ document, which is stored in another temporary variable (`\MGL@temp@b`). In case they are not equal, the `\MGL@next` macro is redefined to only close the

input stream, and `\verbatim@processline` is redefine again to do nothing (a little speed-up).

```

406 \def\verbatim@processline{%
407   \MGL@read\MGL@in@stream{\MGL@temp@a}%
408   \edef\MGL@temp@b{\the\verbatim@line}%
409   \ifx\MGL@temp@a\MGL@temp@b\else%
410     \def\MGL@next{\MGL@closein\MGL@in@stream}%
411     \def\verbatim@processline{}%
412   \fi%
413 }%
```

The `\verbatim@finish` macro, which is called at the end of the environment, is also redefined to perform one last read of the input stream, and then check if the end of file has been reached; if it hasn't, then, despite the end of the environment has been reached —thus the end of code—, there is still code inside the script, so there are differences between them, and `\MGL@next` has to be redefined to do nothing but close the input stream.

```

414 \def\verbatim@finish{%
415   \MGL@read\MGL@in@stream{\MGL@temp@a}%
416   \ifeof\MGL@in@stream\else%
417     \def\MGL@next{\MGL@closein\MGL@in@stream}%
418   \fi%
419 }%
```

Finally, the input stream is opened, and the comparison is started by calling `\verbatim@start`.

```

420 \MGL@openin\MGL@in@stream{#1}%
421 \verbatim@start%
422 }
```

`\MGL@write@funcs` This macro is used only by the `mglfunc` environment. Its only purpose is to store the commands to insert MGL functions in the main script, and is called at the end of the document or when the `\mglname` command is used. For now, we only ask it to write the `stop` command⁷ that separates the section of scripts from the section of functions in the main script.

```

423
424 \def\MGL@write@funcs{\MGL@write\MGL@main@stream{stop^^J}}
```

`\MGL@func` This is the command that writes the MGL functions. It is intended to be stored inside `\MGL@write@funcs`. It opens the backup file of the MGL function whose name is passed as argument (and has been created by a `mglfunc` environment), and then calls `\MGL@@func` to transcript from that file, line by line, to the main script.

```

425 \def\MGL@func#1{%
426   \MGL@openin\MGL@in@stream{\MGL@dir\MGL@backups@dir#1.mgl}%
427   \MGL@@func%
428 }
```

⁷Note the `stop` command is unnecessary in newer versions of the MGL language, but it is kept in `mglTEX` for compatibility and for elegance.

`\MGL@@func` This command transcripts only one line from backup file of a MGL function to the main script. It calls itself recursively until the end of the backup.

```
429 \def\MGL@@func{%
```

It first reads from the input stream to the `\MGL@temp@a` temporary variable.

```
430 \MGL@read\MGL@in@stream{\MGL@temp@a}%
```

If the end of the file has been reached, the stream is closed.

```
431 \ifeof\MGL@in@stream%
```

```
432 \MGL@closein\MGL@in@stream%
```

If the end of file hasn't been reached, `\MGL@temp@a` is written to the main script, and `\MGL@@func` is called recursively.

```
433 \else%
```

```
434 \MGL@write\MGL@main@stream{\MGL@temp@a}%
```

```
435 \expandafter\MGL@@func%
```

```
436 \fi%
```

```
437 }
```

`\MGL@set@verbatim@code` This command sets the parameters for verbatim-like environments and commands.

```
438
```

```
439 \def\MGL@set@verbatim@code{%
```

The following is standard stuff for verbatim-like environments and commands.

```
440 \if@minipage\else\vskip\parskip\fi%
```

```
441 \leftskip\@totalleftmargin\rightskip\z@skip%
```

```
442 \parindent\z@\parfillskip\@flushglue\parskip\z@%
```

```
443 \@@par%
```

```
444 \def\par{%
```

```
445 \if@tempswa%
```

```
446 \leavevmode\null\@@par\penalty\interlinepenalty%
```

```
447 \else%
```

```
448 \@tempswatrue%
```

```
449 \ifhmode\@@par\penalty\interlinepenalty\fi%
```

```
450 \fi%
```

```
451 }%
```

```
452 \obeylines%
```

```
453 \let\do\@makeother\dospecials%
```

```
454 \verbatim@font%
```

```
455 \frenchspacing%
```

```
456 \everypar\expandafter{\the\everypar\unpenalty}%
```

If there are no lines of MGL code, instead of issuing an error, we display a package warning.

```
457 \def\@noitemerr{\PackageWarning{mglTeX}{Empty MGL script}}%
```

The space between the end of the label box and the text of the first item (`\labelsep`) is set to `1em`, while the separation between items (`\itemsep`) is set to zero.

```
458 \labelsep1em%
```

```
459 \itemsep\z@%
```

Since we want the lines of code to be broken between words, but verbatim spaces are unbreakable, we trick L^AT_EX by inserting a breakable spaces (`\space`) instead.

```
460 \def\@xobeysp{\space}\@vobeyspaces%
```

However, L^AT_EX still resists breaking lines as much as possible in order to preserve the shape of paragraphs, so we tell it it's OK not to do so by setting the badness tolerance before hyphenation (`\pretolerance`) and the badness above which bad hboxes will be shown (`\hbadness`) to the maximum value of 10000 (`\@M`).

```
461 \pretolerance\@M%
```

```
462 \hbadness\@M%
```

In order to achieve the desired indentation of broken lines, we use the following trick: We increase the `\leftskip` parameter by the amount specified by `\mglbreakindent`, so that lines will be indented; but then we decrease the `\itemindent` parameter by the same amount so the first line won't be indented.

```
463 \advance\leftskip\mglbreakindent%
```

```
464 \itemindent-\mglbreakindent%
```

```
465 }
```

`\MGL@line@sep` This is the separator displayed at the beginning and ending of the `mglblock` and `mglverbatim` environments, to distinguish the MGL code from the normal text. Its definition is similar to the one of the `\dotfill` command, which can be found in *The L^AT_EX 2_ε Sources* document, but `\nopagebreak` commands have been added to avoid unaesthetic page breaking before and after the separators.

```
466
```

```
467 \def\MGL@line@sep{%
```

```
468 \nopagebreak%
```

```
469 \leavevmode\cleaders\hrule height\mgllinethickness\hfill\kern\z%
```

```
470 \nopagebreak%
```

```
471 }
```

`\MGL@dash@sep` This is the separator displayed at the beginning and ending of the `mglcomments` environment, when it is allowed to be displayed.

```
472 \def\MGL@dash@sep{%
```

```
473 \nopagebreak%
```

```
474 \leavevmode\cleaders\hb@xt@\mgldashwidth{\hss-\hss}\hfill\kern\z%
```

```
475 \nopagebreak%
```

```
476 }
```

6.3 Environments for MGL code embedding

For the following, we agree that if a macro is required by an environment, and it hasn't been already defined, it will be defined between the commands that start and end such environment; also the command's name will have the environment's name as prefix.

`mgl` This environment has to transcript its contents to the document's main script, and create a backup of the code simultaneously; the backup is used to detect changes in following compilations.

`\mgl` The command that starts the `mgl` environment. It is called by the `\begin{mgl}` command.

```

477
478 \newcommand\mgl[1] [] {%
    We define an additional  $\langle key \rangle = \langle value \rangle$  pair in the main family of pairs, corresponding to the label option for this environment. This definition is local because we don't want to be valid outside the environment.
479 \define@key[MGL@gr@keys]{label}{\def\MGL@script{##1}}%
    The list of comma-separated options is processed.
480 \MGL@setkeys[MGL@gr@keys]{#1}%
    If the user hasn't used the label option, the automatic naming mechanism is called. Note that \MGL@main@script@name is set using the \mglname command.
481 \ifundefined\MGL@script{%
482     \stepcounter\MGL@script@no}%
483     \edef\MGL@script{\MGL@main@script@name-MGL-\arabic\MGL@script@no}%
484 }{%
    We use the \MGL@set@script@name to test whether the given name has already been used.
485 \MGL@set@script@name{\MGL@script}%
    \MGL@codes is used to change the codes of special characters.
486 \MGL@codes%
    \MGL@process@script is used to test whether the code has changed or not the last time LATEX has been executed. If it has changed, we call the \MGL@write@script command to (re)write the code; otherwise, the code is scanned again by asking \MGL@compare@code to perform a comparison on the backup file, in order to determine whether the code has changed now.
487 \MGL@process@script{%
488     \MGL@write@script%
489 }{%
490     \MGL@compare@code{\MGL@dir\MGL@backups@dir\MGL@script.mgl}%
491 }%
492 }

```

`\MGL@write@script` (Re)writes the contents of the `mgl` environment.

```

493 \def\MGL@write@script{%

```

`\MGL@next` It contains the actions to perform immediately after the end of `\MGL@write@script`. They are close the output stream; write in the main script the commands to save the image, and to reset the initial values for all MGL parameters and clear the image; finally, write `\MGL@unchanged{\MGL@script}` in the `.aux` file.

```

494 \def\MGL@next{%
495     \MGL@closeout\MGL@out@stream%
496     \MGL@write\MGL@main@stream{%
497         write '\MGL@dir\MGL@graphics@dir\MGL@script\MGL@imgext'^^J%

```

```

498     ^^Jreset^^J%
499   }%
500   \MGL@write\@auxout{\string\MGL@unchanged{\MGL@script}}%
501 }%

```

Now we redefine the `\verbatim@processline` macro to write `\the\verbatim@line` to the main script and to the backup file.

```

502 \def\verbatim@processline{%
503   \MGL@write\MGL@main@stream{\the\verbatim@line}%
504   \MGL@write\MGL@out@stream{\the\verbatim@line}%
505 }%

```

Before writing the MGL code of the environment, we set the default gray/color mode, `mgl`scale, quality and variant.

```

506 \MGL@write\MGL@main@stream{%
507   gray \MGL@gray^^J%
508   setsizecl \MGL@scale^^J%
509   quality \MGL@quality^^J%
510   variant \MGL@variant%
511 }%

```

We open the backup file in the output stream.

```

512 \MGL@openout\MGL@out@stream{\MGL@dir\MGL@backups@dir\MGL@script.mgl}%

```

The transcription process starts by calling the `\verbatim@start` command.

```

513 \verbatim@start%
514 }

```

`\endmgl` The command that ends the `mgl` environment. It is called by the `\end{mgl}` command. It simply calls `\MGL@next` to execute the final actions, and `\MGL@includegraphics` to insert the corresponding image. Note that `\MGL@next` performs different actions depending on whether `\MGL@process@script` calls `\MGL@write@script` or `\MGL@compare@code`, both of which define `\MGL@next` differently.

```

515 \def\endmgl{%
516   \MGL@next%
517   \MGL@includegraphics%
518 }

```

`mgladdon` This environment only writes its contents to the document's main script, so no backup is created, nor compilation or inclusion of graphics.

`\mgladdon` Since this environment doesn't produce any output in the L^AT_EX document, we start a *space hack* by calling `\@bsphack`. We set the appropriate category codes with `\MGL@codes`; the `\verbatim@processline` is redefined to transcript `\the\verbatim@line` to the main script; finally, the `\verbatim@start` command starts the transcription process.

```

519
520 \def\mgladdon{%
521   \@bsphack%
522   \MGL@codes%

```

```

523 \def\verbatim@processline{%
524     \MGL@write\MGL@main@stream{\the\verbatim@line}%
525 }%
526 \verbatim@start%
527 }

\endmgladdon The environment ends by closing the space hack with \@esphack.
528 \def\endmgladdon{\@esphack}

mglfunc This environment is used to define MGL functions inside the document's main
script. Instead of writing directly to the main script, which would cause the MGL
parser to end the execution of that script, it writes to a backup file which is later
transcript before closing the main script.

\mglfunc It starts the mglfunc environment.
529
530 \newcommand\mglfunc[2][0]{%
    Once again, since this command doesn't produce any output in the LATEX docu-
    ment, we use a space hack.
531 \@bsphack%
    Although MGL functions and normal scripts are different in nature, in the sense
    that the first don't produce graphics by themselves, we have to check whether the
    function is being named as another script, because otherwise we run the risk of
    overwriting a backup file or confusing the parser.
532 \MGL@set@script@name{#2}%
    The instruction to transcript from the backup file to the main stream is stored in
    \MGL@write@funcs (see subsection 6.2).
533 \g@addto@macro\MGL@write@funcs{\MGL@func{#2}}%
    The codes for special characters are set.
534 \MGL@codes%
    The \verbatim@processline command is redefined to write \the\verbatim@line
    to the backup file.
535 \def\verbatim@processline{\MGL@write\MGL@out@stream{\the\verbatim@line}}%
    The backup file is opened for writing.
536 \MGL@openout\MGL@out@stream{\MGL@dir\MGL@backups@dir\MGL@script.mgl}%
    The head of the function is written.
537 \MGL@write\MGL@out@stream{func '\MGL@script' #1}%
    The writing process is started.
538 \verbatim@start%
539 }

\endmglfunc It ends the mglfunc environment.
540 \def\endmglfunc{%

```


The end of the function is written.

```
541 \MGL@write\MGL@out@stream{return^^J}%
```

The output stream is closed.

```
542 \MGL@closeout\MGL@out@stream%
```

The *space hack* is terminated.

```
543 \@esphack%
```

```
544 }%
```

mglcode This environment also checks for changes on the code, but, since it writes to its own script, there is no need to create a backup file (the check is performed using the script itself).

\mglcode It starts the **mglcode** environment. Its anatomy is similar to that of the **\mgl** command.

```
545
```

```
546 \newcommand\mglcode[2] []{%
```

```
547 \MGL@setkeys\MGL@gr@keys}{#1}%
```

```
548 \MGL@set@script@name{#2}%
```

```
549 \MGL@codes%
```

```
550 \MGL@process@script{%
```

```
551 \mglcode@write@script%
```

```
552 }{%
```

```
553 \MGL@compare@code{\MGL@dir\MGL@scripts@dir\MGL@script.mgl}%
```

```
554 }%
```

```
555 }
```

\mglcode@write@script This command takes care of creating the script for the **mglcode** environment.

```
556 \def\mglcode@write@script{%
```

\MGL@next It performs the actions immediately following the end of **\mglcode@write@script**.

```
557 \def\MGL@next{%
```

The output stream is closed.

```
558 \MGL@closeout\MGL@out@stream%
```

The **\MGL@unchanged{\MGL@script}** command is written to the **.aux** file.

```
559 \MGL@write\@auxout{\string\MGL@unchanged{\MGL@script}}%
```

The script compilation instruction is written to the terminal.

```
560 \MGL@write{18}{%
```

```
561 mglconv -q \MGL@quality\space -g \MGL@gray\space%
```

```
562 -S \MGL@scale\space -v \MGL@variant\space%
```

```
563 -s "\MGL@dir\MGL@scripts@dir\mglsetupscripname.mgl"\space%
```

```
564 -o "\MGL@dir\MGL@graphics@dir\MGL@script\MGL@imgext"\space%
```

```
565 "\MGL@dir\MGL@scripts@dir\MGL@script.mgl"%
```

```
566 }%
```

```
567 }%
```

The `\verbatim@processline` command is redefined so it writes `\the\verbatim@line` to the output stream.

```
568 \def\verbatim@processline{\MGL@write\MGL@out@stream{\the\verbatim@line}}%
```

The script is opened for writing in the output stream.

```
569 \MGL@openout\MGL@out@stream{\MGL@dir\MGL@scripts@dir\MGL@script.mgl}%
```

The writing process is started by calling the `\verbatim@start` command.

```
570 \verbatim@start%
571 }
```

`\endmglscode` It ends the `mglscode` environment. `\MGL@next` is called to perform the final actions and `\MGL@includegraphics` is called to insert the corresponding image. Once more, `\MGL@next` has different meanings depending on whether `\MGL@process@script` branches to `\MGL@compare@code` or `\mglscode@write@script`.

```
572 \def\endmglscode{%
573   \MGL@next%
574   \MGL@includegraphics%
575 }
```

`mglsript` The only function of this environment is to write its contents to a script; no image is created. It has been considered that scanning the code looking for changes is as much operation-expensive as simply writing the code, so it has been decided that this environment (over)writes the script everytime it's executed, without performing any check.

`\mglsript` Starts the environment. Its anatomy is similar to the previous environments. Since no output is written to the L^AT_EX document, a *space hack* is used.

```
576
577 \def\mglsript#1{%
578   \@bsphack%
579   \MGL@set@script@name{#1}%
580   \MGL@codes%
581   \def\verbatim@processline{\MGL@write\MGL@out@stream{\the\verbatim@line}}%
582   \MGL@openout\MGL@out@stream{\MGL@dir\MGL@scripts@dir\MGL@script.mgl}%
583   \verbatim@start%
584 }
```

`\endmglsript` It ends the `mglsript` environment. The *space hack* ends here, too.

```
585 \def\endmglsript{%
586   \MGL@closeout\MGL@out@stream%
587   \@esphack%
588 }
```

`mglssetupscript` This environment doesn't require any backup file nor any scanning for changes.

`mglscommon` Although the user sets the name of the script by redefining `\mglssetupscriptname`, it is necessary to perform a check of the name, just in case a name has been inadvertently repeated.

`\mglsetupscript` Starts the `mglsetupscript` environment.

```
589
590 \def\mglsetupscript{%
591   \@bsphack%
592   \MGL@set@script@name{\mglsetupscriptname}%
593   \MGL@codes%
594   \def\verbatim@processline{\MGL@write\MGL@out@stream{\the\verbatim@line}}%
595   \MGL@openout\MGL@out@stream{\MGL@dir\MGL@scripts@dir\MGL@script.mgl}%
596   \verbatim@start%
597 }
```

It is declared to be an only-preamble command, so it can't be used after the `\begin{document}` instruction.

```
598 \@onlypreamble\mglsetupscript
```

`\mglcommon` This macro is defined to be a synonym for `\mglcommon` (to keep backwards compatibility).

```
599 \let\mglcommon\mglsetupscript
600 \@onlypreamble\mglcommon
```

`\endmglsetupscript` It ends the `mglsetupscript` environment.

```
601 \def\endmglsetupscript{%
602   \MGL@closeout\MGL@out@stream%
603   \@esphack%
604 }
```

`\endmglcommon` It is defined to be a synonym for `\endmglsetupscript`.

```
605 \let\endmglcommon\endmglsetupscript
```

6.4 Fast creation of graphics

`mglsetup` This environment is meant to contain code that is executed just before the instruction of a `mglplot` command, producing always the same output. Instead of writing a new chunk of code for that purpose, `mglsetup` is defined as a special case of the `mglfunc` environment, with the exception that the MGL function obtained this way doesn't accept any argument —thus producing always the same output.

`\mglsetup` It is defined as an alias for `\mglfunc`, but only the name of the MGL function is passed to it, forcing the assumption that its number of arguments is zero.

```
606
607 \def\mglsetup#1{\mglfunc{#1}}%
```

`\endmglsetup` Likewise, it is defined as an alias for `\endmglfunc`.

```
608 \let\endmglsetup\endmglfunc
```

`\mglplot` Although the function of this command is quite simple and straightforward, it requires many lines of code and some tricks in order to reach the desired functionality.

```
609
610 \newcommand\mglplot[2][{}]{%
```

Since this is a command, we need to explicitly create a local group so that all changes keep private to the command.⁸

```
611 \bgroup%
```

We add some $\langle key \rangle = \langle value \rangle$ pairs locally. The `label` key works exactly as the one of the `mgl` environment.

```
612 \define@key{MGL@gr@keys}{label}{\edef\MGL@script{##1}}%
```

The `setup` key defines the variable `\MGL@mglplot@setup` which is later used to call a setup function for the corresponding image.

```
613 \define@key{MGL@gr@keys}{setup}{\def\MGL@mglplot@setup{##1}}%
```

The `separator` key uses the `\MGL@def@for@loop` to define `\MGL@for` so that it iterates over lists separated by the indicated separator symbol.

```
614 \define@key{MGL@gr@keys}{separator}{\MGL@def@for@loop{##1}}%
```

Now, we process the keys passed by the user.

```
615 \MGL@setkeys{MGL@gr@keys}{#1}%
```

If the user hasn't specified a name using the `label` option, then a name is auto-generated following the same naming mechanism of the `mgl` environment.

```
616 \ifundefined{MGL@script}{%
617   \stepcounter{MGL@script@no}
618   \edef\MGL@script{\MGL@main@script@name-MGL-\arabic{MGL@script@no}}
619 }{ }%
```

The name of the script is checked.

```
620 \MGL@set@script@name{\MGL@script}%
```

If the user hasn't specified a setup, then the only code that has to be written is the non-optional argument of `\mglplot`; it is stored in the temporary variable `\MGL@temp@a`.

```
621 \ifundefined{MGL@mglplot@setup}{%
622   \edef\MGL@temp@a{#2}%
623 }{ }%
```

If the user has specified a setup, we store the code to call the setup and the code passed by the user in the temporary variable `\MGL@temp@a`.

```
624 \edef\MGL@temp@a{call '\MGL@mglplot@setup' ^^J#2}%
625 }
```

If the code has changed the last time L^AT_EX has been run, we call `\mglplot@write@script` to (re)write and (re)compile the script; otherwise, we call `\mglplot@compare@code` to check if it has changed this time.

```
626 \MGL@process@script{%
627   \mglplot@write@script%
628 }{%
629   \mglplot@compare@code%
630 }%
```

⁸In contrast, environments keep changes private by default.

The corresponding image is included in the document.

```
631 \MGL@includegraphics%
```

Finally, the local group is closed.

```
632 \egroup%
```

```
633 }
```

`\mglplot@write@script` This command takes the code stored in the `\MGL@temp@a` variable by the `\mglplot` command and writes it to the document's main script and to a backup file, so changes in the code can be detected.

```
634 \def\mglplot@write@script{%
```

The default quality is written to the main script.

```
635 \MGL@write\MGL@main@stream{%
```

```
636   gray \MGL@gray^^J%
```

```
637   setsizecl \MGL@scale^^J%
```

```
638   quality \MGL@quality^^J%
```

```
639   variant \MGL@variant%
```

```
640 }%
```

The backup file is opened to write in the output stream.

```
641 \MGL@openout\MGL@out@stream{\MGL@dir\MGL@backups@dir\MGL@script.mgl}%
```

Now we use the `\MGL@for` command to iterate over `\MGL@temp@a`. It takes a piece of code up to the separator symbol indicated by the user, and stores it in the temporary variable `\MGL@temp@b`, which is then written to the main script and backup file.

```
642 \MGL@for\MGL@temp@b:=\MGL@temp@a\do{%
```

```
643   \MGL@write\MGL@main@stream{\MGL@temp@b}%
```

```
644   \MGL@write\MGL@out@stream{\MGL@temp@b}%
```

```
645 }%
```

The output stream is closed.

```
646 \MGL@closeout\MGL@out@stream%
```

The instructions to save the image and reset the MGL parameters are written to the main script.

```
647 \MGL@write\MGL@main@stream{%
```

```
648   write '\MGL@dir\MGL@graphics@dir\MGL@script\MGL@imgext'^^J%
```

```
649   ^^Jreset^^J%
```

```
650 }%
```

Finally, `\MGL@unchanged{\MGL@script}` is written to the `.aux` file.

```
651 \MGL@write\@auxout{\string\MGL@unchanged{\MGL@script}}%
```

```
652 }
```

`\mglplot@compare@code` This macro is in charge of comparing the code from a `\mglplot` command to detect changes.

```
653 \def\mglplot@compare@code{%
```

The action that will finish this command is, for now, to write `\MGL@unchanged{\MGL@script}` in the `.aux` file; it is stored in the `\MGL@next` variable. If no changes in the code are found, this will remain as the last action; otherwise, it will be overwritten to do nothing.

```
654 \def\MGL@next{\MGL@write\@auxout{\string\MGL@unchanged{\MGL@script}}}%
```

The backup file is opened for reading in the input stream.

```
655 \MGL@openin\MGL@in@stream{\MGL@dir\MGL@backups@dir\MGL@script.mgl}%
```

Once again, the `\MGL@for` command is used to iterate over the `\MGL@temp@a` variable defined by `\mglplot`. Pieces of code are taken up to the appearance of the separator symbol indicated by the user. In every iteration, the corresponding piece of code is stored in the `\MGL@temp@b` variable, one line of code is read from the input stream to the variable `\MGL@temp@c`, and these two are compared; if they are different, we redefined `\MGL@next` to do nothing.

```
656 \MGL@for\MGL@temp@b:=\MGL@temp@a\do{%
657   \MGL@read\MGL@in@stream{\MGL@temp@c}%
658   \ifx\MGL@temp@b\MGL@temp@c\else%
659     \let\MGL@next\relax%
660   \fi%
661 }%
```

The input stream is closed.

```
662 \MGL@closein\MGL@in@stream%
```

`\MGL@next` is executed.

```
663 \MGL@next%
664 }
```

6.5 Verbatim-like environments

`mglblock` The main body of these environments is the same; the only difference is that the `mglblock*` unstarred version creates an entry in the `\listofmglscrip`ts, while the starred version doesn't.

`\mglblock` This command defines the switch `\@MGL@list@script@` as true, so a `\listofmglscrip`ts entry for the code is created, then calls the main body of the environment (`\mglblock@`).

```
665
666 \def\mglblock{\@MGL@list@script@true\mglblock@}
```

`\mglblock*` This command defines the switch `\@MGL@list@script@` as false, so no `\listofmglscrip`ts entry is created, then calls the main body of the environment (`\mglblock@`).

```
667 \@namedef{mglblock*}{\@MGL@list@script@false\mglblock@}
```

`\mglblock@` This macro contains the real functionality of the `mglblock` and `mglblock*` environments. It is the common code they both have.

```
668 \newcommand\mglblock@[2][]{%
```

First, the switch `\@MGL@lineno@` is set to true, so the lines of code will be numbered by default.

```
669 \MGL@lineno@true%
```

Now we process the decision of the user of keeping the line numbering or not.

```
670 \setkeys{MGL@verb@keys}{#1}%
```

The name of the script is checked for repetition.

```
671 \MGL@set@script@name{#2}%
```

If the switch `\@MGL@list@script@` is true, we increase the counter for verbatim code (`MGL@verb@no`), and add a contents line to the `.lms` file, using the style set by `\lMGL@script`. In order to be able to use special characters in the name of the script, we use the `\detokenize` primitive.

```
672 \ifMGL@list@script@%
673   \refstepcounter{MGL@verb@no}%
674   \addcontentsline{lms}{MGL@script}{%
675     \protect\numberline{\theMGL@verb@no.}%
676     {\ttfamily\protect\detokenize{MGL@script.mgl}}}%
677   }%
678 \fi%
```

If the switch `\@MGL@lineno@` is true, we create a list such that each item will be labeled or numbered by the `MGL@lineno` counter. The style for the label is set by `\mgllinenostyle`.

```
679 \ifMGL@lineno@%
680   \list{\mgllinenostyle\arabic{MGL@line@no}.}{\usecounter{MGL@line@no}}%
```

Otherwise, we create a list without labeling for the items.

```
681 \else%
682   \list{}{}%
683 \fi%
```

The parameters for the environment are set.

```
684 \MGL@set@verbatim@code%
```

The thickness of the box that will contain the name of the script has to be the same as the thickness for the separation line at the beginning of the verbatim code.

```
685 \fboxrule=\mgllinethickness%
```

The separator to indicate the beginning of the verbatim code is positioned; we use the `\MGL@line@sep` command to draw it.

```
686 \item[\MGL@line@sep]\fbox{%
687   \bfseries\ttfamily\expandafter\detokenize\expandafter{MGL@script.mgl}%
688 } \hskip\labelsep\MGL@line@sep\par\par%
```

The `\verbatim@processline` is redefined to put `\the\verbatim@line` in an item of the list, and to also write it to the script file.

```
689 \def\verbatim@processline{%
690   \item\the\verbatim@line%
691   \MGL@write\MGL@out@stream{\the\verbatim@line}%
692 }%
```

The script file is opened for writing.

```
693 \MGL@openout\MGL@out@stream{\MGL@dir\MGL@scripts@dir\MGL@script.mgl}%
```

The writing process starts.

```
694 \verbatim@start%
695 }
```

\endmgloblock To finish the environment's work, the script file is closed, the separator indicating the end of the verbatim code is placed, and the list is ended.

```
696 \def\endmgloblock{%
697 \MGL@closeout\MGL@out@stream%
698 \item[\MGL@line@sep]\hskip-\labelsep\MGL@line@sep%
699 \endlist%
700 }
```

\endmgloblock* It is defined as an alias for **\endmgloblock**.

```
701 \expandafter\let\csname endmgloblock*\endcsname\endmgloblock
```

mglverbatim These two environments have the same main body. Their difference is that the unstarred version creates an entry for the **\listofmglscrip**ts, while the starred version doesn't. We will apply a similar approach to the used for the **mglblock** and **mglblock*** environments.

\mglverbatim Similar in function to **\mglblock**.

```
702
703 \def\mglverbatim{\@MGL@list@script@true\mglverbatim@}
```

\mglverbatim* Similar in function to **\mglblock***.

```
704 \@namedef{mglverbatim*}{\@MGL@list@script@false\mglverbatim@}
```

\mglverbatim@ The main body of these environments; it's similar to **\mglblock@**. To explain each line of this command would be repetitive, so we explain only the different parts.

```
705 \newcommand\mglverbatim@[1][{}]{%
706 \@MGL@lineno@true%
707 \define@key{MGL@verb@keys}{label}{\edef\MGL@script{##1}}%
708 \setkeys{MGL@verb@keys}{#1}%
709 \if\MGL@lineno@%
710 \list{\mgllinenostyle\arabic{MGL@line@no}.}{\usecounter{MGL@line@no}}%
711 \else%
712 \list{}{}%
713 \fi%
714 \MGL@set@verbatim@code%
715 \fboxrule=\mgllinethickness%
```

The separator that indicates the beginning of the verbatim code is different depending on whether the user has specified a name associated to the code or not. If no name has been indicated, i.e., **\MGL@script** is undefined, the separator is just a line; otherwise, i.e., **\MGL@script** is defined, the separator is similar to the one of the **mglblock** environment.


```

716 \@ifundefined{MGL@script}{%
717   \edef\MGL@script{\mglverbatimname}%
718   \item[\MGL@line@sep]\hskip-\labelsep\MGL@line@sep%
719 }{%
720   \item[\MGL@line@sep]\fbox{%
721     \bfseries\ttfamily\expandafter\detokenize\expandafter{\MGL@script.mgl}%
722   }\hskip\labelsep\MGL@line@sep\par\par%
723 }%

```

Note that, if the user requests an entry in the `\listofmglscripts`, the contents line is added to the same `.lms` file. So here start the similitudes again.

```

724 \if\MGL@list@script%
725   \refstepcounter{MGL@verb@no}%
726   \addcontentsline{lms}{MGL@script}{%
727     \protect\numberline{\theMGL@verb@no.}%
728     {\ttfamily\protect\detokenize{\MGL@script}}}%
729   }%
730 \fi
731 \def\verbatim@processline{%
732   \item\the\verbatim@line%
733 }%
734 \verbatim@start%
735 }

```

`\endmglverbatim` This command could be defined as an alias for `\endmglblock`, for they execute the same instructions. But, for the sake of congruence, we rewrite the code.

```

736 \def\endmglverbatim{%
737   \MGL@closeout\MGL@out@stream%
738   \item[\MGL@line@sep]\hskip-\labelsep\MGL@line@sep%
739   \endlist%
740 }

```

`\endmglverbatim*` It is an alias for `\endmglverbatim`.

```

741 \expandafter\let\csname endmglverbatim*\endcsname\endmglverbatim

```

`mglcomment` This environment has two different behaviors: When comments are allowed by the user, it behaves similarly to the `mglverbatim` environment; if comments are not allowed, it behaves as the `comment` environment from the `verbatim` package. So it is natural that we borrow code from them and adapt it to the corresponding situation.

`\mglcomment` The switch `\@MGL@comments@` governs the behavior of this command.

```

742
743 \def\mglcomment{%
  If the switch is true, i.e., the user requests displaying of comments, we start a list
  without labels, and set the parameters for verbatim text.
744   \if\MGL@comments@%
745     \list{}{}%
746     \MGL@set@verbatim@code%

```

The separator indicating the beginning of the comment is similar to the one used by the `mglblock` and `mglverbatim` environments; the differences are that, instead of using a solid line, we use a dashed line (`\MGL@dash@sep`), and instead of displaying the name of a script, we display `\mglcommentname`.

```
747 \item\hskip-\labelsep<\MGL@dash@sep\mglcommentname\MGL@dash@sep>%
```

The two following lines redefine the `\verbatim@processline` command to display the comment text line by line as items of the list, and start the process of writing the text.

```
748 \def\verbatim@processline{\item\the\verbatim@line}%
749 \verbatim@start%
```

If the switch is false, i.e., the user requests no to display comments, we start a *space hack*, since no text output will be produced. Then, the category codes are changed with `\MGL@codes`, and the macros `\verbatim@startline`, `\verbatim@addtoline`, `\verbatim@processline` and `\verbatim@finish` are disabled, as done in the `comment` environment of the `verbatim` package. Finally, we call the `\verbatim@` command to start reading the text in the environment.

```
750 \else%
751 \@bsphack%
752 \MGL@codes%
753 \let\verbatim@startline\relax%
754 \let\verbatim@addtoline\@gobble%
755 \let\verbatim@processline\relax%
756 \let\verbatim@finish\relax%
757 \verbatim@%
758 \fi%
759 }
```

`\endmglcomment` The `\@MGL@comments@` switch also governs the behavior of this command. If it's true, then the separator that ends the comment—which is the same as the one that starts it—is displayed, and the list is ended; otherwise, simply the *space hack* is ended.

```
760 \def\endmglcomment{%
761 \if\MGL@comments@%
762 \item\hskip-\labelsep<\MGL@dash@sep\mglcommentname\MGL@dash@sep>%
763 \endlist%
764 \else%
765 \@esphack%
766 \fi%
767 }
```

6.6 Commands for external scripts

Since external scripts exist independently of the \LaTeX document, there is no need of environments to process them, just commands. Remember these commands work on the supposition that the scripts don't change.

`\mglgraphics` This command compiles the external script and includes it in the document. Although that process is simple, the code to execute it is relatively large due to the possibility of the user specifying an optional path, so many parameters have to be checked.

```

768
769 \newcommand\mglgraphics[2] [] {%
  In order to keep all definitions and changes local, we start a local group inside
  which all LATEX code will be contained.
770   \bgroup%
    We add the option path for the user to be able to specify the location of the script,
    which is stored in the variable \MGL@force@path.
771   \define@key\MGL@gr@keys}{path}{\def\MGL@forced@path{##1}}%
    The optional arguments are processed.
772   \MGL@setkeys\MGL@gr@keys{#1}%
    The name of the script is set, though it is not check for multiple naming. This is
    necessary, since \MGL@includegraphics uses this macro.
773   \edef\MGL@script{#2}%
    If the corresponding image exists, then this script has been compiled in a previous
    LATEX run, so nothing is done, but the inclusion of the image.
774   \IfFileExists{\MGL@dir\MGL@graphics@dir\MGL@script\MGL@imgext}{}%
    If the image doesn't exist, we check if the user has specified a custom location.
775     \ifundefined\MGL@forced@path{%
      If no custom location has been used, we iterate over the list of search paths
      (\MGL@paths): If we find the requested script, then we store its location in
      \MGL@temp@b.
776       \for\MGL@temp@a:=\MGL@paths\do{%
777         \IfFileExists{\MGL@temp@a\MGL@script.mgl}{%
778           \edef\MGL@temp@b{\MGL@temp@a}%
779         }{}%
780       }%
781     }{%
      If the user has specified a path for the script, we check if the script actually exists.
      If it does, we store its location inside \MGL@temp@b.
782       \IfFileExists{\MGL@forced@path\MGL@script.mgl}{%
783         \edef\MGL@temp@b{\MGL@forced@path}%
784       }{}%
785     }%
    If \MGL@temp@b is not defined, the script has not been found, so a warning is
    issued.
786     \ifundefined\MGL@temp@b{%
787       \PackageWarning{mgltex}{%
788         MGL script "\MGL@script.mgl" not found%
789       }%
790     }%

```

If \MGL@temp@b is defined, the script has been found, so we compile it.

```

791      \MGL@write{18}{%
792          mglconv -q \MGL@quality\space -g \MGL@gray\space%
793          -S \MGL@scale\space -v \MGL@variant\space%
794          -s "\MGL@dir\MGL@scripts@dir\mglsetupscriptname.mgl"\space%
795          -o "\MGL@dir\MGL@graphics@dir\MGL@script\MGL@imgext"\space%
796          "\MGL@temp@b\MGL@script.mgl"%
797      }%
798  }%
799 }%
```

The image is included.

```
800 \MGL@includegraphics%
```

The local group ends here.

```
801 \egroup%
802 }
```

\mglinclude The purpose of these commands is to transcript the MGL code from a script.
\mglinclude* Once again, this is a straightforward functionality, but the code is quite large, so it has been separated in various macros.

The unstarred version defines the \MGL@list@script@ switch to be true, so the script is listed with the \listofmglscripts command, and then it calls the main body of code (\mglinclude@), just like the mglblock environment does. The starred version defines the switch as false and calls the main body, too.

```

803
804 \def\mglinclude{\MGL@list@script@true\mglinclude@}
805 \@namedef{mglinclude*}{\MGL@list@script@false\mglinclude@}
```

\mglinclude@

```
806 \newcommand\mglinclude@[2] [] {%
```

We start a local group to keep definitions and changes local.

```
807 \bgroup%
```

The default behavior is to number lines of MGL code, so the switch \MGL@lineno@ is set to true.

```
808 \MGL@lineno@true%
```

We add the option `path` for the user to be able to specify the location of the script, which is stored in \MGL@forced@path.

```
809 \define@key{MGL@verb@keys}{path}{\def\MGL@forced@path{##1}}%
```

The options are processed.

```
810 \setkeys{MGL@verb@keys}{#1}%
```

We don't need to check if there are multiple scripts with the same name, so we manually set \MGL@script, instead of using \MGL@set@script@name.

```
811 \edef\MGL@script{#2}%
```

We check if the user has specified a custom location for the script.

```
812 \ifundefined{MGL@forced@path}{%
```

If no custom location has been used, we iterate over the list `\MGL@paths` to find the script.

```

813   \for\MGL@temp@b:=\MGL@paths\do{%
      If the script exists, we store its location in \MGL@temp@a
814       \IfFileExists{\MGL@temp@b\MGL@script.mgl}{%
815         \edef\MGL@temp@a{\MGL@temp@b}%
816       }{%
817     }%
818   }{%

```

If the user specified the location of the script, we check if it exists, in which case we store its location in `\MGL@temp@a`.

```

819   \IfFileExists{\MGL@script.mgl}{%
820     \edef\MGL@temp@a{\MGL@forced@path}%
821   }{%
822 }%

```

If `\MGL@temp@a` is not defined, the script has not been found, so we issue a warning, and display a box in the document with the words *MGL script not found*.

```

823 \ifundefined{MGL@temp@a}{%
824   \PackageWarning{mgltex}{%
825     MGL script "\MGL@forced@path\MGL@script.mgl" not found%
826   }%
827   \center%
828   \fbox{%
829     \centering%
830     \bfseries\Huge%
831     \begin{tabular}{c}MGL\\script\\not\\found\end{tabular}%
832   }%
833   \endcenter%
834 }{%

```

If `\MGL@temp@a` is defined, the script has been found, so we call `\mglinclude@` to set up the inclusion of the script.

```

835   \mglinclude@%
836 }%
837 \egroup%
838 }

```

`\mglinclude@` This macro sets the parameters for the inclusion of the script, and calls the command in charge of the transcription.

```

839 \def\mglinclude@{%
      We first add the script to the LATEX list of included files.
840   \@addtofilelist{\MGL@script.mgl}%
      If the user has used the unstarred version of \mglinclude, we add a contents line
      to the .lms file.
841   \if\MGL@list@script%
842     \refstepcounter{MGL@verb@no}%

```

```

843 \addcontentsline{lms}{MGL@script}{%
844 \protect\numberline{\theMGL@verb@no.}%
845 {\ttfamily\protect\detokenize{MGL@script.mgl}}}%
846 }%
847 \fi%

```

We start a `\list` in which each line of code will be an item. If the lines have to be numbered, we use the `MGL@line@no` counter.

```

848 \ifMGL@lineno%
849 \list{\mgllinenostyle\arabic{MGL@line@no}.}{\usecounter{MGL@line@no}}%
850 \else%
851 \list{}{}%
852 \fi%

```

We set the parameters for a verbatim code.

```

853 \MGL@set@verbatim@code%

```

The heading of the environment is set. It is similar to that of the `mgblock` environment.

```

854 \fboxrule=\mgllinethickness%
855 \item[\MGL@line@sep]\fbox{%
856 \bfseries\ttfamily\expandafter\detokenize\expandafter{MGL@script.mgl}%
857 }\hskip\labelsep\MGL@line@sep\par\par%

```

We redefine the `\verbatim@processline` macro from the `verbatim` package to put `\the\verbatim@line` on an item.

```

858 \def\verbatim@processline{%
859 \item\the\verbatim@line%
860 }%

```

The script is opened for reading.

```

861 \immediate\openin\MGL@in@stream="MGL@temp@a\MGL@script.mgl"%

```

We call `\mglinclude@@@` to start the transcription.

```

862 \mglinclude@@@%
863 }

```

`\mglinclude@@@` This command transcribes the MGL code of the script and closes the list started in `\mglinclude@@`, adding the corresponding separation line to separate the code from normal text.

```

864 \def\mglinclude@@@{%

```

Since the transcription has to be done even when `mg!TEX` is off, instead of using the `\MGL@read` command—which is inactive when the package is off—, we use the usual commands from `LATEX` to read from the file.

```

865 \immediate\read\MGL@in@stream to \MGL@temp@b%

```

If the end of file has been reached, we close the input stream, add the separation line, and end the `\list`.

```

866 \ifeof\MGL@in@stream%
867 \immediate\closein\MGL@in@stream%
868 \item[\MGL@line@sep]\hskip-\labelsep\MGL@line@sep%
869 \endlist%

```

Otherwise, we use `\verbatim@startline` to clean the `\verbatim@line` buffer, then we add the just read line to the buffer, and call `\verbatim@processline` to include it as an item of the list. Finally, we recursively call `\mglinclude@@@` to read the next line.

```

870 \else%
871   \verbatim@startline%
872   \expandafter\verbatim@addtoline\expandafter{\MGL@temp@b}%
873   \verbatim@processline%
874   \expandafter\mglinclude@@@%
875 \fi%
876 }

```

6.7 Additional commands

`\listofmglscripts` This command creates the *list of MGL scripts* section. It has to be defined differently depending on whether the used document class defines the `\l@chapter` command or it only the `\l@section` command, which set the style for making a table of contents entry for the `\chapter` command and the `\section` command, respectively. If none of them are defined, we define our own style based on the latter.

```

877
878 \ifx\l@chapter\@undefined%

```

If `\l@chapter` is not defined, we check if `\l@section` is.

```

879 \ifx\l@section\@undefined%

```

If `\l@section` is not defined, we set the `\listofmglscripts` command to perform exactly as the `\section*{\listofmglscriptsname}` would do in the usual book and article L^AT_EX classes, except that the type of section is `MGL@list`.

```

880 \def\listofmglscripts{%
881   \@startsection{MGL@list}%
882   {1}{0em}{-3.5ex plus -1ex minus -0.2ex}%
883   {2.5ex plus 0.2ex}%
884   {\centering\normalfont\bfseries\large}*%
885   {\listofmglscriptsname}%

```

We use the `\mkboth` command to set the page marks according to the current page style.

```

886   \@mkboth{%
887     \MakeUppercase\listofmglscriptsname%
888   }{%
889     \MakeUppercase\listofmglscriptsname%
890   }%

```

The *list of MGL scripts* is created by reading the document's `.lms` file.

```

891   \@starttoc{lms}%
892 }%

```

The `\l@MGL@list` style has the same code as the `\l@section` style.

```

893 \newcommand*\l@MGL@list[2]{%

```

```

894     \ifnum \c@tocdepth >\z@
895         \addpenalty\@secpenalty
896         \addvspace{1.0em \@plus\p@}%
897         \setlength\@tempdima{1.5em}%
898         \begingroup
899             \parindent \z@ \rightskip \@pnumwidth
900             \parfillskip -\@pnumwidth
901             \leavevmode \bfseries
902             \advance\leftskip\@tempdima
903             \hskip -\leftskip
904             #1\nobreak\hfil \nobreak\hb@xt@\@pnumwidth{\hss #2}\par
905         \endgroup
906     \fi%
907 }%
908 \else%

```

If the `\l@section` style is defined, the *list of MGL scripts* is just an unnumbered section.

```

909     \def\listofmglscripts{%
910         \section*{\listofmglscriptsname}%
911         \@mkboth{%
912             \MakeUppercase\listofmglscriptsname%
913         }{%
914             \MakeUppercase\listofmglscriptsname%
915         }%
916         \@starttoc{lms}%
917     }%
918     \fi%
919 \else%

```

If the `\l@chapter` style is defined, the *list of MGL scripts* is just an unnumbered chapter.

```

920     \def\listofmglscripts{%
921         \chapter*{\listofmglscriptsname}%
922         \@mkboth{%
923             \MakeUppercase\listofmglscriptsname%
924         }{%
925             \MakeUppercase\listofmglscriptsname%
926         }%
927         \@starttoc{lms}%
928     }%
929 \fi%

```

`\mglTeX` This macro pretty-prints the name of the package. It has a starred version, which also prints the version.

```

930
931 \DeclareRobustCommand\mglTeX{%
932     mgl\TeX\@ifstar{~v4.2}{}%
933 }

```


6.8 Local settings commands

- `\mglswitch` This command turns on and off the package according to its argument; it is just a call to the commands `\MGL@switch@on` or `\MGL@switch@off`.
- ```

934 \def\mglswitch#1{%
935 \MGL@test@switch{#1}{\mglswitch}%
936 \csname MGL@switch@\MGL@temp@a\endcsname%
937 }
```
- `\mglcomments` Depending on the option passed by the user, it calls `\@MGL@comments@on` or `\@MGL@comments@off`.
- ```

938 \def\mglcomments#1{%
939   \MGL@test@switch{#1}{\mglcomments}%
940   \csname @MGL@comments@\MGL@temp@a\endcsname%
941 }
```
- `\mglquality` See under the title *Initialization*, subsection 6.1.
- `\mglscale` See under the title *Initialization*, subsection 6.1.
- `\mglvariant` See under the title *Initialization*, subsection 6.1.
- `\mglimgext` This command changes the value of `\MGL@imgext`.
- ```

942 \def\mglimgext#1{\def\MGL@imgext{#1}}
```
- `\mglname` The purpose of this command is to force the closure of the current main script, compile the corresponding figures, and open a new main script. At first, it is defined to only change the value of `\MGL@main@script@name` because the main script is not opened until the call of `\begin{document}`; but at that point, it is redefined to perform the described actions.
- ```

943 \def\mglname#1{\edef\MGL@main@script@name{#1}}
```
- Here is the redefinition of `\mglname` after the `\begin{document}` command.
- ```

944 \AtBeginDocument{%
945 \def\mglname#1{%
```
- We start a space hack, ince this function has no real effect on the document.
- ```

946     \bsphack%
```
- The MGL functions created throughout the document are written.
- ```

947 \MGL@write@funcs%
```
- We force the closure of the main script. We use `\immediate\closeout` instead of `\MGL@closeout` in case `mglTEX` is off.
- ```

948     \immediate\closeout{\MGL@main@stream}%
```
- The closed script is compiled.
- ```

949 \MGL@write{18}{%
950 mglconv -q \MGL@quality\space -g \MGL@gray\space%
951 -S \MGL@scale\space -v \MGL@variant\space%
952 -s "\MGL@dir\MGL@scripts@dir\mglsetupscripname.mgl"\space%
953 -n "\MGL@dir\MGL@scripts@dir\MGL@main@script@name.mgl"%
954 }%
```

The name of the new main script is updated, and it is check for overwriting, using `\MGL@set@script@name` inside a local group, since this command defines `\MGL@script`, which we need undefined in some parts of the code of the package.

```

955 \edef\MGL@main@script@name{#1}%
956 \bgroup\MGL@set@script@name{\MGL@main@script@name}\egroup%
957 \MGL@openout\MGL@main@stream{%
958 \MGL@dir\MGL@scripts@dir\MGL@main@script@name.mgl%
959 }%
```

We set the default size for the graphics that the main script will generate; without this line the `setsize` commands written automatically by `mgLTeX` wouldn't work.

```

960 \MGL@write\MGL@main@script@name{setsize 600 400}
```

The space hack is ended.

```

961 \@esphack%
962 }%
963 }
```

## 6.9 Advanced settings commands

`\mgldir` This command is the interface for the user to change the value of `\MGL@dir`. It is an only-preamble macro, since using it elsewhere would cause faulty behavior.

```

964
965 \def\mgldir#1{\def\MGL@dir{#1}}\@onlypreamble\mgldir
```

`\mglscripdir` This command modifies the value of `\MGL@scripts@dir`. It is also an only-preamble macro.

```

966 \def\mglscripdir#1{\def\MGL@scripts@dir{#1}}\@onlypreamble\mglscripdir
```

`\mglgraphicsdir` Modifies the value of `\MGL@graphics@dir`. It is an only-preamble macro.

```

967 \def\mglgraphicsdir#1{\def\MGL@graphics@dir{#1}}\@onlypreamble\mglgraphicsdir
```

`\mglbackupsdir` Modifies the value of `\MGL@backups@dir`. It is an only-preamble macro.

```

968 \def\mglbackupsdir#1{\def\MGL@backups@dir{#1}}\@onlypreamble\mglbackupsdir
```

`\mglpaths` This command adds a list of search paths for scripts to the existing one (`\MGL@paths`).

```

969 \def\mglpaths#1{\g@addto@macro\MGL@paths{,#1}}
```

`\mglsettings` First, we define a  $\langle key \rangle = \langle value \rangle$  family, `MGL@sett@keys`, for this command.

```

970 \define@key\MGL@sett@keys{dir}{\def\MGL@dir{#1}}
971 \define@key\MGL@sett@keys{scripdir}{\def\MGL@scripts@dir{#1}}
972 \define@key\MGL@sett@keys{graphicsdir}{\def\MGL@graphics@dir{#1}}
973 \define@key\MGL@sett@keys{backupsdir}{\def\MGL@backups@dir{#1}}
974 \define@key\MGL@sett@keys{paths}{\g@addto@macro\MGL@paths{,#1}}
975 \define@key\MGL@sett@keys{switch}{\mglswitch{#1}}
976 \define@key\MGL@sett@keys{comments}{\mglcomments{#1}}
```

```

977 \define@key{MGL@sett@keys}{gray}{\mglgray{#1}}
978 \define@key{MGL@sett@keys}{mglyscale}{\mglyscale{#1}}
979 \define@key{MGL@sett@keys}{quality}{\mglquality{#1}}
980 \define@key{MGL@sett@keys}{variant}{\mglvariant{#1}}
981 \define@key{MGL@sett@keys}{imgext}{\def\MGL@imgext{. #1}}

```

The command receives and executes the  $\langle key \rangle = \langle value \rangle$  pairs for `MGL@sett@keys`. This is an only-preamble command.

```

982 \def\mglsettings#1{\setkeys{MGL@sett@keys}{#1}}
983 \@onlypreamble\mglsettings

```

## 6.10 User-definable macros

```

\mglsetupscriptname The user is allowed to modifu these commands, so no @ symbol is used on them.
\mglcommentname 984
\listofmglscriptsname 985 \def\mglsetupscriptname{MGL_setup_script}
\mglverbatimname 986 \def\mglcommentname{\mglTeX{ } comment}
\mgllinenostyle 987 \def\listofmglscriptsname{List of MGL scripts}
\mgldashwidth 988 \def\mglverbatimname{(Unnamed MGL verbatim script)}
\mgllinethickness 989 \def\mgllinenostyle{\footnotesize}
\mglbreakindent 990 \newdimen\mgldashwidth\mgldashwidth=0.75em
991 \newdimen\mgllinethickness\mgllinethickness=0.25ex
992 \newdimen\mglbreakindent\mglbreakindent=1em

```

## 6.11 Final adjustments

To finish the code of `mglTEX`, we set the behavior of the package at the call of the `\begin{document}` and `\end{document}` commands.

We tell `LATEX` to check the name of the document's main script for overwriting. We do this by calling `\MGL@set@script@name` inside a local group, because it defines `\MGL@script`, which we need undefined in certain parts of the code. Then the script is opened. We use `\immediate\openout` instead of `\MGL@openout` for this purpose, since, otherwise, we run the risk of the main script not being created when needed, if the user turns off `mglTEX` before the `\begin{document}` command, and turns it on immediately after. Finally, we set the default size for the graphics the main script will generate; without this line the `setsizescl` commands written automatically by `mglTEX` wouldn't work.

```

993
994 \AtBeginDocument{%
995 \bgroup\MGL@set@script@name{\MGL@main@script@name}\egroup%
996 \immediate\openout\MGL@main@stream=%
997 \MGL@dir\MGL@scripts@dir\MGL@main@script@name.mgl%
998 \MGL@write\MGL@main@stream{setsize 600 400}%
999 }

```

We also set the actions for the call of `\end{document}`

```

1000
1001 \AtEndDocument{%

```

`\MGL@write@funcs` will simply write the MGL functions throughout the L<sup>A</sup>T<sub>E</sub>X document.

1002 `\MGL@write@funcs%`

The main script is closed. We use the `\immediate\closeout` construction instead of `\MGL@closeout`, since the script must be closed even when `mglTEX` is off.

1003 `\immediate\closeout\MGL@main@stream%`

The main script is compiled.

1004 `\MGL@write{18}{%`

1005 `mglconv -q \MGL@quality\space -g \MGL@gray\space%`

1006 `-S \MGL@scale\space -v \MGL@variant\space%`

1007 `-s "\MGL@dir\MGL@scripts@dir\mglsetupscriptname.mgl"\space%`

1008 `-n "\MGL@dir\MGL@scripts@dir\MGL@main@script@name.mgl"%`

1009 `}%`

1010 `}`